

All Oil Companies Are Not Alike.



Cedar Creek Anticline
Opportunity Today, Opportunity Tomorrow
February 13, 2013

About Forward Looking Statements



The data contained in this presentation that are not historical facts are forward-looking statements that involve a number of risks and uncertainties. Such statements may relate to, among other things, forecasted capital expenditures, dates of pipeline construction commencement and completion, drilling activity, acquisition and dispositions plans, development activities, timing of CO₂ injections and initial production response in tertiary flooding projects, estimated costs, production rates and volumes or forecasts thereof, hydrocarbon reserve quantities and values, CO₂ reserves, helium reserves, potential reserves from tertiary operations, future hydrocarbon prices or assumptions, liquidity, cash flows, availability of capital, borrowing capacity, finding costs, rates of return, overall economics, net asset values, potential reserves and anticipated production growth rates in our CO₂ models, 2012 estimated production, 2012 and future production and expenditure estimates, and availability and cost of equipment and services. These forward-looking statements are generally accompanied by words such as “estimated”, “projected”, “potential”, “anticipated”, “forecasted” or other words that convey the uncertainty of future events or outcomes. These statements are based on management’s current plans and assumptions and are subject to a number of risks and uncertainties as further outlined in our most recent Form 10-K and Form 10-Q filed with the SEC. Therefore, the actual results may differ materially from the expectations, estimates or assumptions expressed in or implied by any forward-looking statement made by or on behalf of the Company.

Cautionary Note to U.S. Investors – Current SEC rules regarding oil and gas reserve information allow oil and gas companies to disclose in filings with the SEC not only proved reserves, but also probable and possible reserves that meet the SEC’s definitions of such terms. We disclose only proved reserves in our filings with the SEC. Denbury’s proved reserves as of December 31, 2011 were estimated by DeGolyer & MacNaughton, an independent petroleum engineering firm. In this presentation, we make reference to probable and possible reserves, some of which have been prepared by our independent engineers and some of which have been prepared by Denbury’s internal staff of engineers. In this presentation, we also refer to estimates of resource “potential” or other descriptions of volumes potentially recoverable, which in addition to reserves generally classifiable as probable and possible (2P and 3P reserves), include estimates of reserves that do not rise to the standards for possible reserves, and which SEC guidelines strictly prohibit us from including in filings with the SEC. These estimates, as well as the estimates of probable and possible reserves, are by their nature more speculative than estimates of proved reserves and are subject to greater uncertainties, and accordingly the likelihood of recovering those reserves is subject to substantially greater risk.



- **Who is Denbury?**
- **History of Cedar Creek Anticline (CCA)**
- **CCA Waterflood Enhancement Plans**
- **Future CO₂ EOR Potential of CCA**



Who We Are:

- Denbury is the Leading CO₂ Enhanced Oil Recovery (CO₂ EOR) Company in the Gulf Coast Region, with an Emerging Presence in the Rocky Mountain Region
- We are the Largest Equity Owner/User of CO₂ in the Gulf Coast Region
- We are one of the Largest Oil-Focused Independent Energy

What We Do:

- Denbury is Aggressively Exploiting Our Large Inventory of Gulf Coast and Rocky Mountain CO₂ EOR Development Opportunities
- Company estimated production for Q4 2012 was 60,052 net BOE/d of which 35,206 BOE/d is CO₂ EOR and the remainder from waterflood and primary production

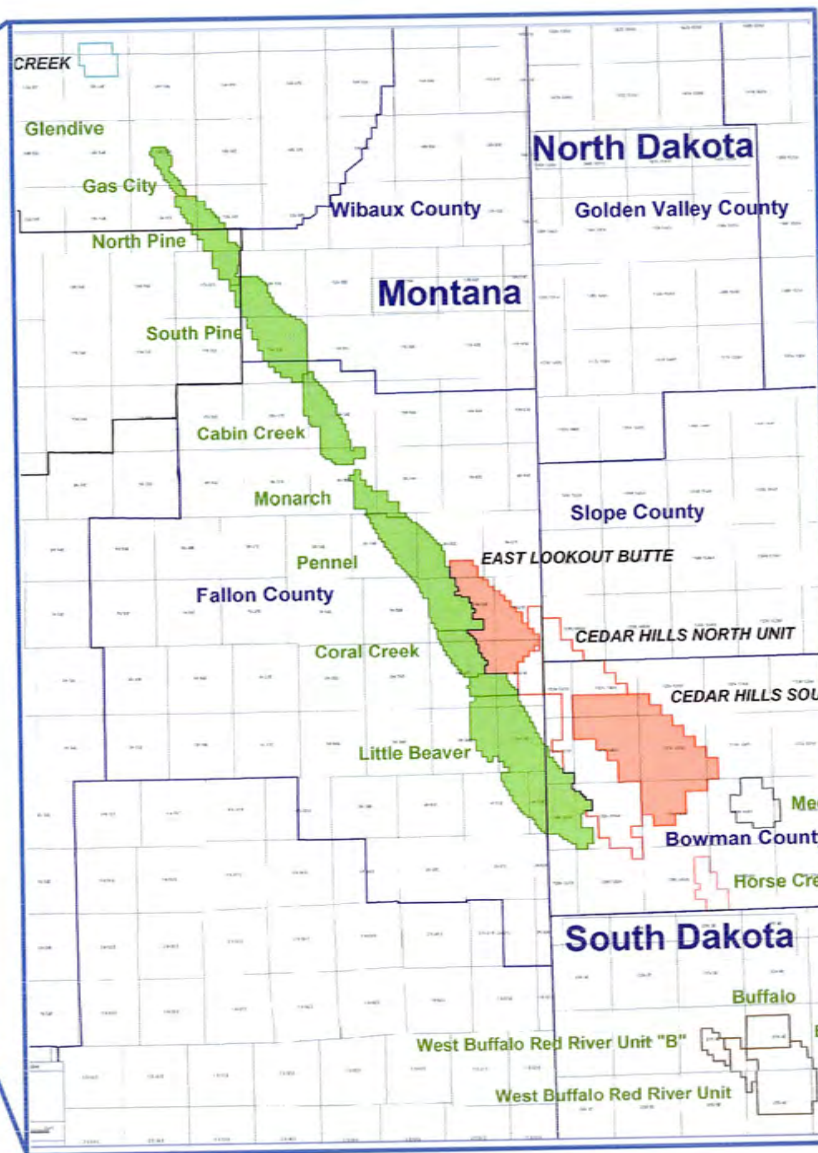


- **Denbury is the largest oil producer in the State of Mississippi**
 - Produce over 39,000 gross barrels of oil per day
 - 33,000 is a result of CO₂-EOR Operations
- **Denbury is the largest oil producer in the State of Montana**
 - Produce ~13,000 barrels of oil per day
 - Directly employ 95 people and 16 contractors/consultants in the State
 - More than 150 non Denbury people working on a daily basis in construction, maintenance, and rigs
 - Paid over \$53 million in State Severance Taxes in 2011
 - Paid over \$2.5 million in Royalties to the State of Montana in 2011
- **Denbury operates 17 CO₂-EOR Projects in Mississippi, Louisiana, Texas, Wyoming , and now Montana.**
- **Produces approximately 1.1 Billion cubic feet of CO₂ per day**
- **Operates 1000+ miles of CO₂ delivery pipeline**

History of Cedar Creek Anticline



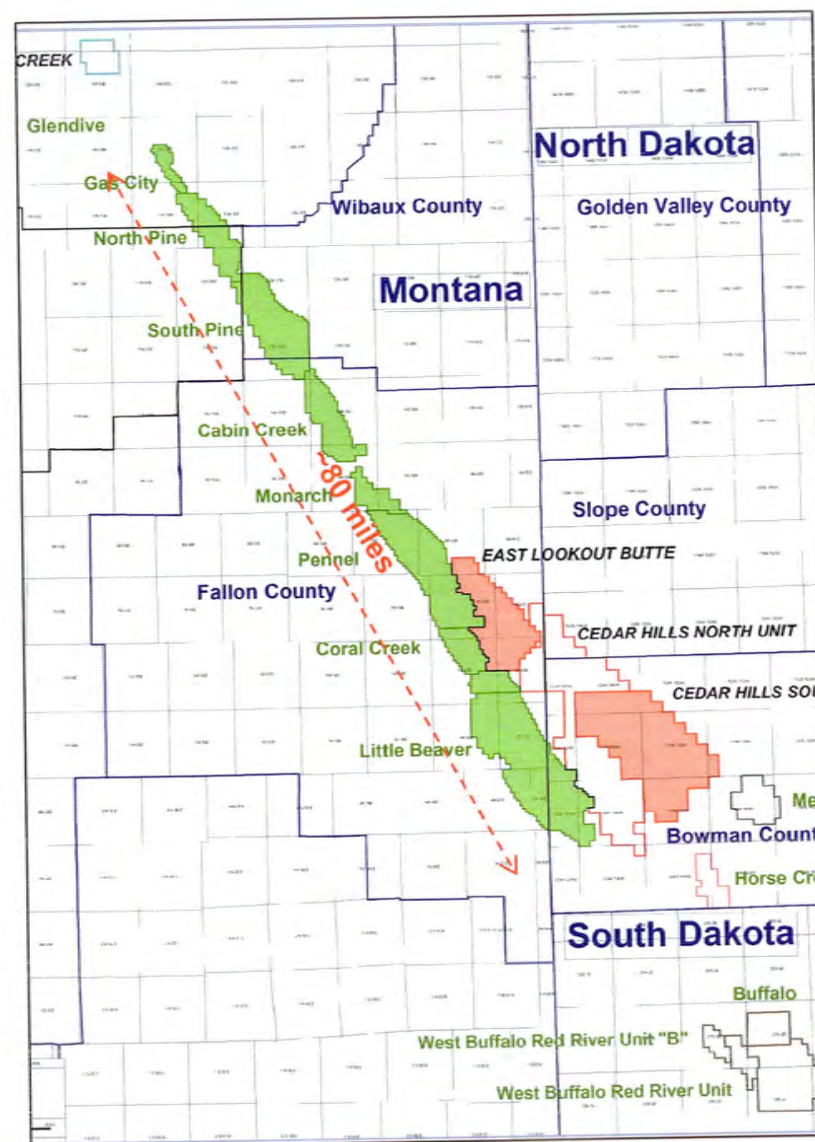
Cedar Creek Anticline (CCA)



- Cedar Creek Anticline is over 100 miles long, with Denbury's properties covering over 80 miles
- Extends from Montana into North Dakota



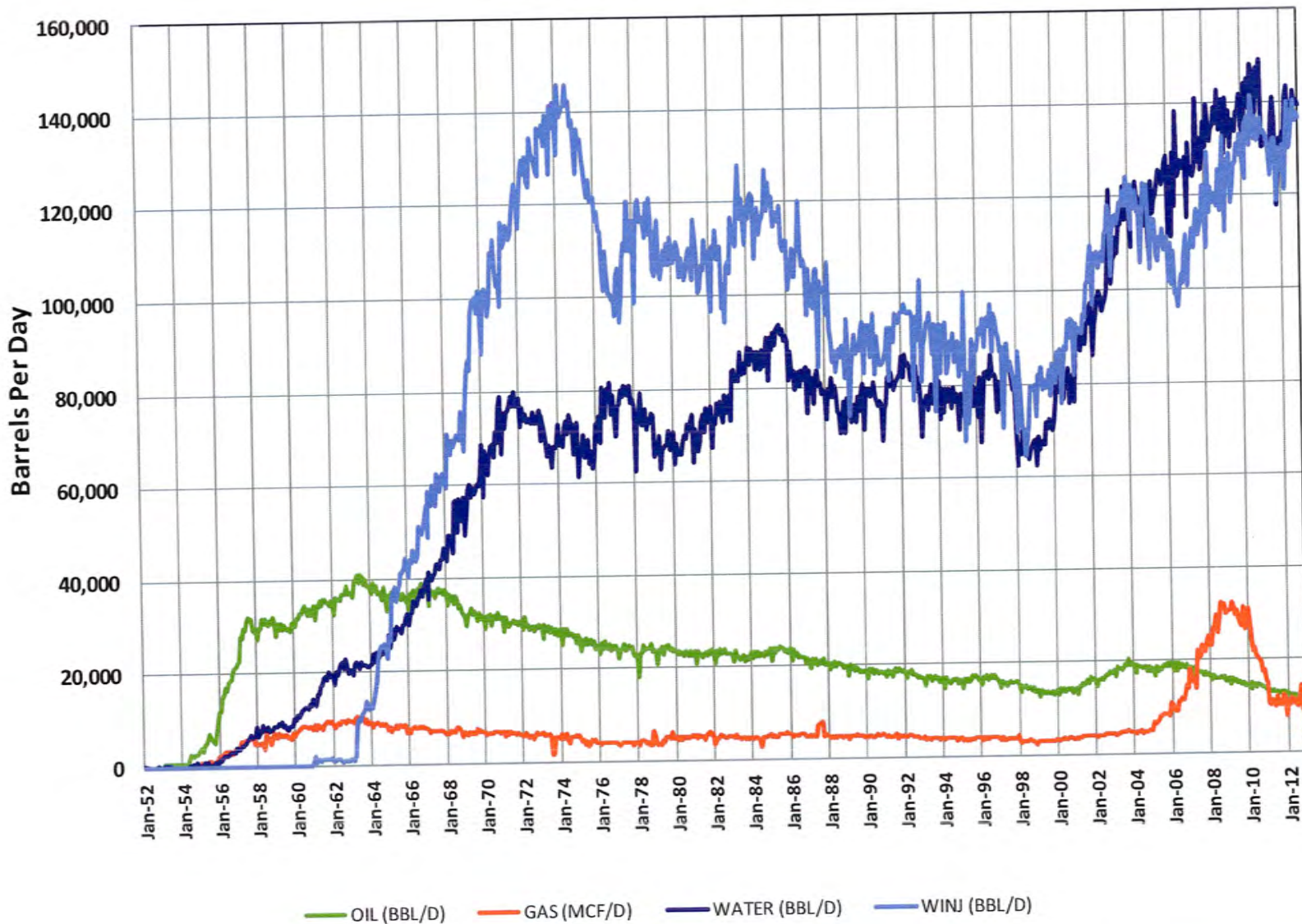
- South western edge of Williston Basin
- Series of 8 Federal units (not including recent transactions), along with smaller properties
- Existing waterflood production totals ~12,000 BOPD
- Carbonate (dolomite) low permeability rock
- Developed primarily by Shell in 50's-60's; CO₂ pilot mid 80's
- Original Oil in Place of all units in CCA is estimated at over 3 billion barrels of oil
- Cum Production = 484 MMBO Year End 2012



Cedar Creek Anticline Production History



Cedar Creek Anticline Gross Production & Injection





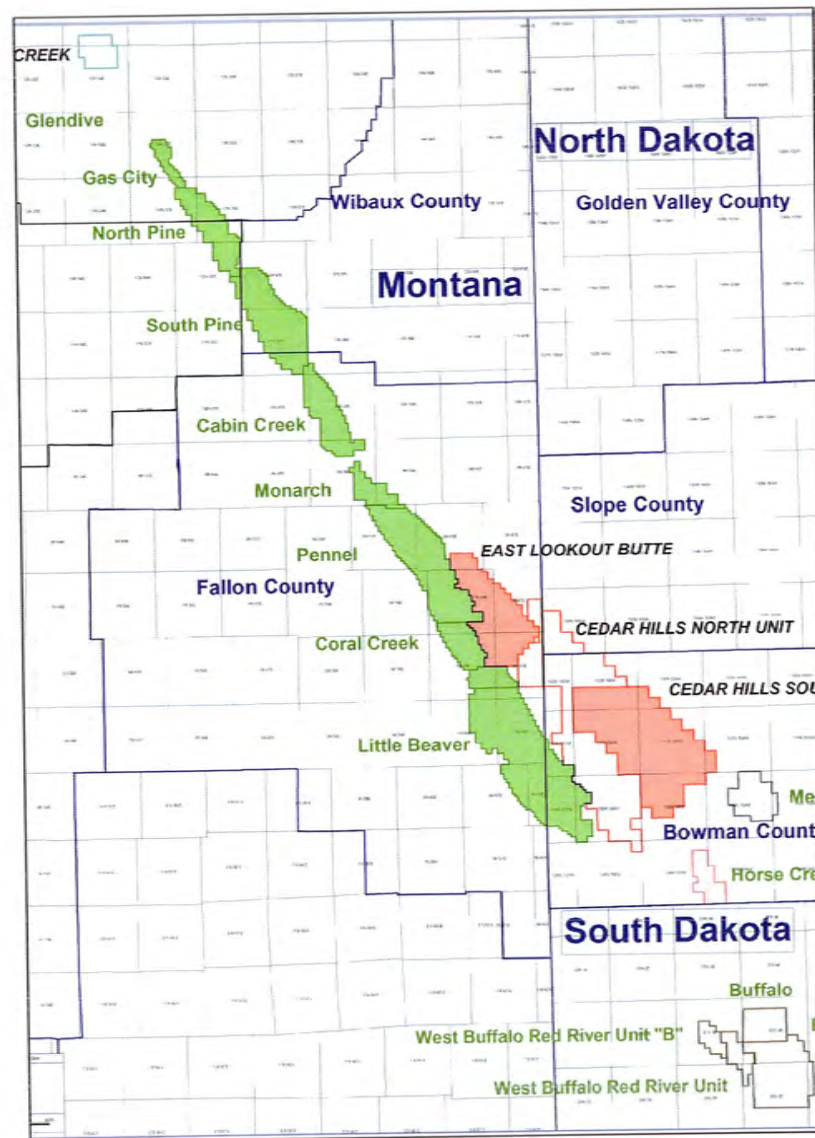
- **Shallow gas discovery in 1913 in Gas City field by Eastern Montana Oil and Gas Co.**
- **Silurian and Ordovician oil discovery in 1952 by Shell**
- **Initial primary development began in 1953 followed by waterflood operations beginning in 1959.**
- **Shell instituted full scale waterflood 1964-1967**
- **Encore Acquisition Co. acquired CCA assets from Shell in 1999**
- **Horizontal drilling in Red River U4 (Red River B) initiated in 2000**
 - **Nearly 500 horizontal wells, redrills and new wells have been drilled within the CCA assets**
 - **Wells ranging from a few hundred feet to 7000 feet**
- **Encore initiates High Pressure Air Injection Project**
 - **Pennel in 2002, Cedar Creek in 2003**
 - **Terminated 2010 and returned to waterflood**
- **Denbury acquires Encore Acquisition Co in Mar 2010**
- **Denbury drills first infill well in CCA at South Pine in 2012, with a peak rate of 379 BOPD**

Waterflood Enhancement





- **Current Well Count**
 - 605 active oil producers
 - 273 active water injectors
 - 44 active service wells
- **Current Gross Production**
 - 11,593 BOPD
 - 2,600 MCFPD
 - 139,700 BWPD
 - 136,478 BWPD Injected
- **Current Activity Level**
 - 1 Drilling rig operating
 - 13 Workover/maintenance rigs
 - 67 Denbury employees
 - 13 Contractors
 - 122 non-Denbury employees





- **Large remaining reserve potential at Cedar Creek Anticline**
 - Optimization of current operations
 - Infill drilling to capture bypassed oil
 - Secondary reservoirs not fully developed

- **2012 Infill drilling results encouraging**
 - SP 24X-15A completed in Red River/Stony Mountain with a peak rate of 379 BOPD
 - SP 23X-22 completed in Red River/Stony Mountain
 - Showed good pressure and high oil saturations
 - Low inflow due to proximity to fault

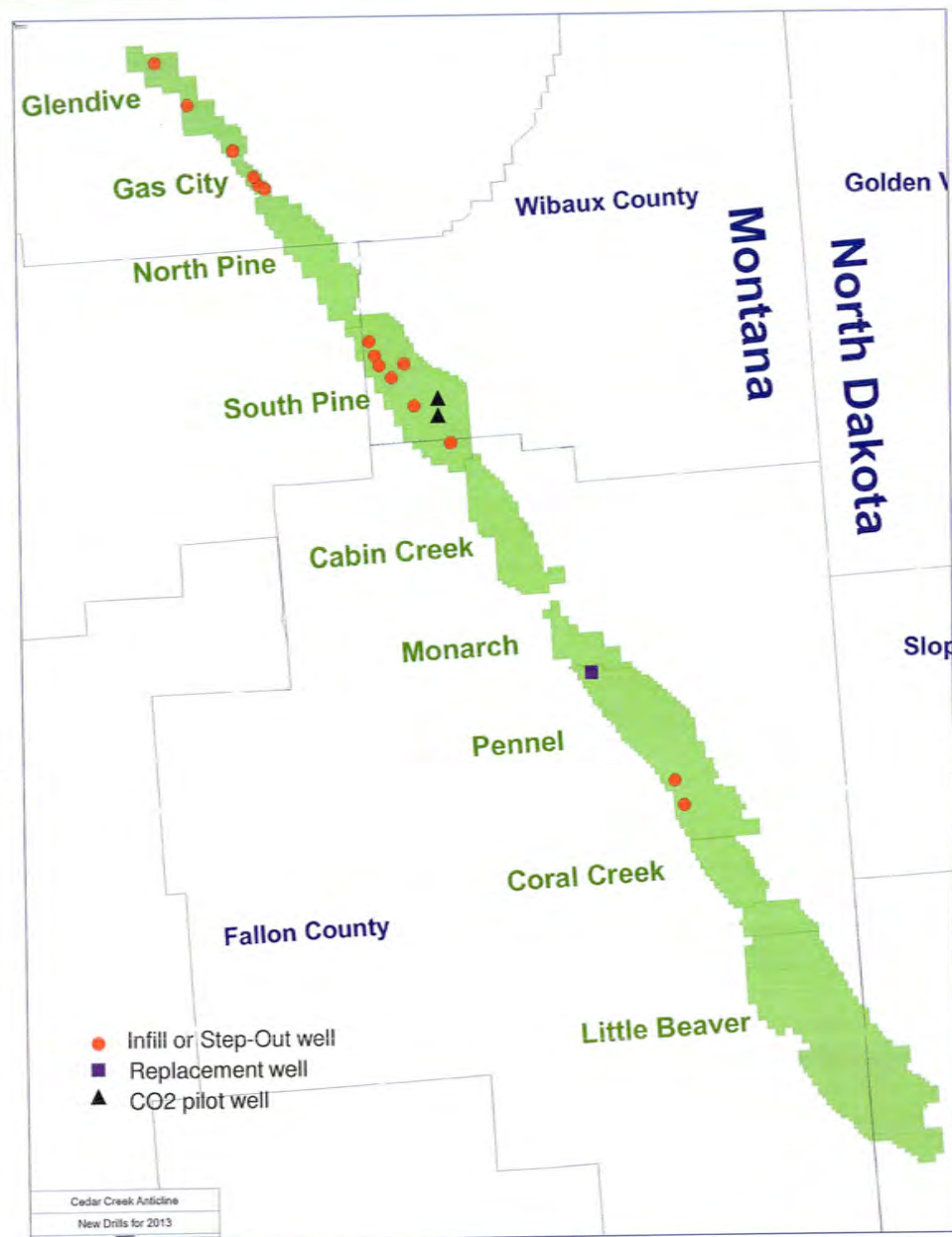


- **Begin Infill Drilling in existing waterfloods**
 - Down space to 20 acre equivalent
 - Test secondary intervals
 - Deeper Red River, Stony Mountain, and Interlake
 - Target areas of trapped oil or under-drilled areas
 - 18 Proposed New Wells
 - 12 Producers
 - 6 Injectors
 - Gather core, log, and pressure data to fill gaps in current data set
- **Step out drilling at Gas City/Glendive**
 - Step out drilling to continue success of last two wells drilled in 2006
 - Preparation for unitization for waterflood project at Glendive
- **Begin efforts for unitization of Monarch Ordovician intervals for future waterflood development**
- **Seismic test line planned for 2013 in South Pine**
 - Planning full South Pine 3D seismic shoot in 2013

CCA Planned 2013 Well Locations



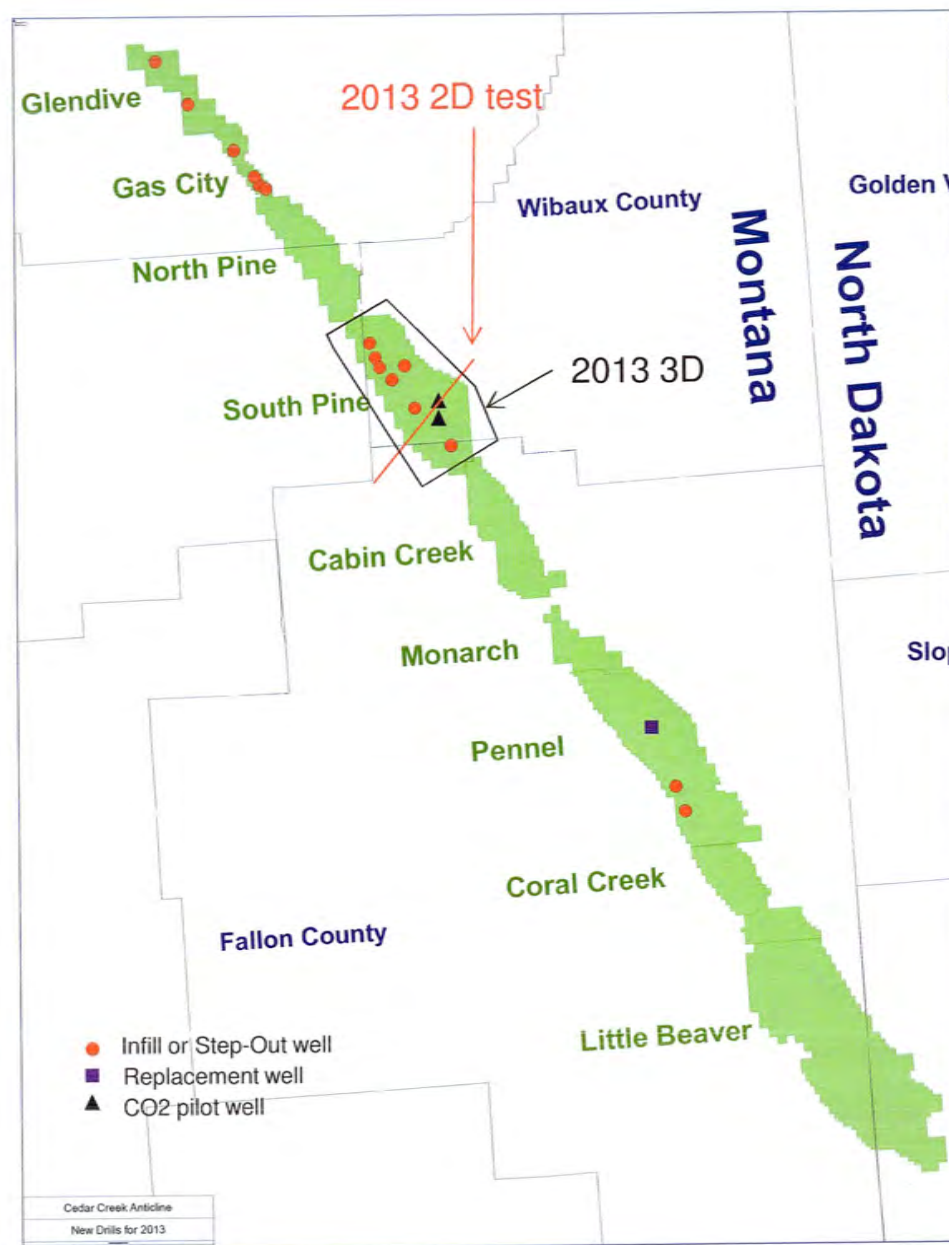
- 2013 initial plans call for drilling 15 infill and step-out wells – 6 wells on BLM lands
- One replacement well planned in Pennel to replace
- Drilling concentrated in South Pine and Gas City/Glendive areas
- Two CO₂ pilot wells planned for 2013 in South Pine
- Tentatively proposed ~50 new wells in 2014 for continued infill drilling across Cedar Creek Anticline
 - Locations contingent on 2013 drilling program
 - Estimated half of 2014 wells will be on BLM lands



CCA Planned Seismic Data Acquisition 2013-2014



- Seismic program to assist in placing waterflood infill wells
- 2013
 - 2D source test line in South Pine (February)
 - 3D in South Pine (August)
- 2014
 - Potential 4D seismic test in Pilot area - South Pine
 - 2D Test in Pennel/Cabin



CO₂ Enhanced Oil Recovery





- The entire Cedar Creek Anticline is currently being studied for potential CO₂ enhanced oil recovery project in the future
- Cedar Creek Anticline is estimated to have originally contained ~3 to ~5 billion barrels of oil, much of which is not recoverable by primary or secondary recovery methods
 - Typical CO₂ recovery factors can range from 10% to 20% of Original Oil in Place
- Shell conducted CO₂ injection test in 1985 at Pine South
 - Encouraging results as far as the effectiveness of CO₂ displacing oil
 - Overall Injectivity a concern from an economic viewpoint



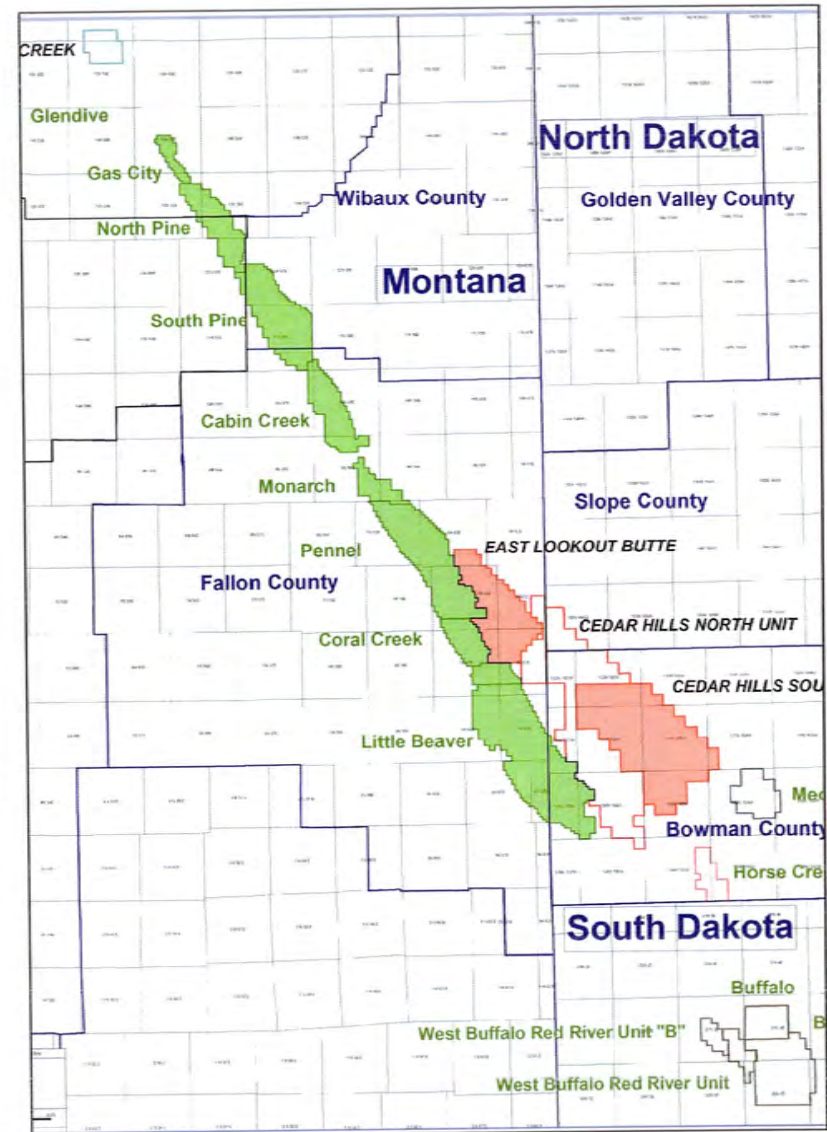
- **2013 Plans for Studying CO₂ Enhance Oil Recovery Feasibility**
 - Complete Petrophysical re-evaluation of all logs and core data
 - Remapping of all zones and construction of geocellular model
 - Redetermination of Original Oil in Place by zone
- **Field Studies**
 - **Injectivity testing with CO₂ in selected wells/reservoirs across CCA**
 - Determine injectivity by zone
 - Determine impact of Water Alternating Gas (WAG) on injectivity
 - Currently planned to test injectivity in 6 to 8 wells in Interlake, Stony Mountain, and Red River intervals
 - **Begin drilling first of 2 pattern pilot for full CO₂ flood test in 2014**
 - Currently planned for Pine South
 - Reduced spacing to accelerate results and minimize CO₂ purchases
 - Injection planned to start Q2 2014



- **The CO₂ Pilot designed to determine**
 - **Expected total processing rate for a flood**
 - **CO₂ flood performance**
 - Oil
 - Water
 - CO₂ production
 - **Relative performance of the individual pay zones**
 - **Commingled injection and production vs. segregated**
 - **Artificial lift requirements**
 - **Impact of Water Alternating Gas process**



- Cedar Creek Anticline is a major producing asset for Denbury
- Large potential for infill drilling and optimization of waterflood
 - Next few years focused on optimization and expansion of waterfloods
- Large potential target for CO₂ EOR project
 - Large original oil in place and large remaining oil in place
 - Original CO₂ testing in the 80's was encouraging
 - 2013 and 2014 will look to quantify CO₂ potential further



Perrigo, Terri

From: Ronald S Efta [wcaefta@midrivers.com]
Sent: Friday, January 25, 2013 4:01 PM
To: Perrigo, Terri; 'Bret Smelser'; jking@hancock-enterprises.com; 'Jay Gunderson'; Linda Nelson; samplecatcher@yahoo.com; Halvorson, Jim; Hudak, George; Richmond, Tom; Sasaki, Steve; Buslee, Chris; Peterson, Norman; pat.brennan@apachecorp.com; sgray@grayandjohnsonlaw.com; Tanner_Quiring@swn.com; pmcorrie@lathropgage.com; rbelanger@lathropgage.com; jlee@crowleyfleck.com; Brent Chicken
Subject: Force Pooling Changes
Importance: High

Dear Board Members, Staff and other interested parties,

I apologize for the delay in getting to the proposed force pooling guidelines or changes that we are working on. I have been tied up with various matters since we last met and have not had time to work on them. The purpose of this email is to let the various attorneys and representatives of the oil companies who are interested send some input to me which I would be happy to consider. If any of the staff or other members of the Board have any concerns or suggestions, I would also like to receive those.

Some of the changes and matters that I think we need to consider are as follows:

- (1) The force pooling of unlocatable mineral owners. We have the Unlocatable Mineral Owners Trust Provision which must be utilized anyway after production occurs and the parties still cannot be found. It seems that could be used ahead of drilling.
- (2) The furnishing of proof that the mineral owners who were located received notice. A signed receipt that notice was received seems an obvious point to consider.
- (3) Some sort of evidence that a reasonable offer was made to any located and unleased mineral owners. In this regard, I have noticed in the last couple of years increased threats from various leasing companies that mineral owners will be force pooled if they do not accept the terms and the lease forms with which they are presented. Many of those terms are not what other owners are receiving. There are some very bad lease forms out there. Absentee mineral owners seem to be more the victims of these practices than the people who actually live in the oil producing areas.

There are probably many other things that I have not listed in this brief email which are relevant. I would invite everyone to send me their thoughts for a proposed set of guidelines for the Board to use in the instances which we are being requested to force pool mineral owners. I do not think whatever guidelines we consider at this time need to address force pooling working interests.

FINANCIAL STATEMENT
As of 2/1/13
Percent of Year Elapsed: 58

OIL AND GAS DIVISION
FY13 Budget vs. Expenditures

FTE Obj		2011			2012			2013			2014		
		Regulatory Budget	Expend	Expend % of Budget	UIC Budget	Expend	Expend % of Budget	EPA CO2 Primacy	Expend	Expend % of Budget	TOTAL BUDGET	TOTAL EXPENDS	Expend % of Budget
		17.0			3.5						20.5		
1000	General PS	(2,133)			185,181	85,338	0.60				(2,133)		
1100	Salaries	1,075,334	346,114	0.43	322	405	-				1,322,275	459,936	0.35
1300	Other Comp		2,545	0.00	61,438	25,535							
1400	Benefits/Pns		115,302		(9,884)						(9,884)		
1600	Vacancy Savings		-		66,135	9,459	0.14	1,500,000	67,378	0.045	250,000	12,043	0.03
2100	Contracted Svcs	531,225	55,193	0.10	9,526	6,709	0.70				62,545	32,048	0.51
2200	Supplies	53,019	25,339	0.48	7,228	4,082	0.56				46,710	31,389	0.67
2300	Communications	39,482	27,307	0.69	6,612	4,031	0.61				38,704	17,803	0.46
2400	Travel	32,092	13,771	0.43	2,353	1,388	0.59				20,122	11,926	0.59
2500	Rent	17,769	10,539	0.59	2,404	2,317	0.94				14,372	13,270	0.92
2600	Utilities	11,908	10,953	0.92	2,856	2,312	0.80				12,618	12,944	1.02
2700	Repair/Maint	9,722	10,532	1.08	16,909	4,553	0.27				45,765	13,890	0.30
2800	Other Expenses	26,857	9,337	0.35	12,500	-					48,075	-	
3100	Equipment	35,575	-	0.00									
6000	Grants												
	Total	1,832,850	626,933	0.34	363,680	146,127	0.40	1,500,000	67,378	0.045	250,000	12,043	0.05

FUNDING	2011	2012	2013	2014
State Special	1,849,114	256,209	114,848	0.45
Federal	18,328.50	107,471	31,279	0.29
Total Funds	1,867,442.50	363,680	146,127	

18,328.50

FY 11 Carryforward
Org 2021
start balance 191,319

REVENUE INTO STATE SPECIAL REVENUE ACCOUNT 2/1/13			
	FY13	FY12	Percentage FY13:FY12
Oil Production Tax	1,365,642	1,892,587	0.72
Gas Production Tax	103,176	233,675	0.44
Drilling Permit Fees	36,700	69,300	0.53
UIC Permit Fees	189,000	219,400	0.86
Enhanced Recovery Filing Fee	-	-	-
Interest on Investments	3,673	12,176	0.30
Insurance Proceeds	-	1,160	-
Accommodations Tax Rebate	-	-	-
Copies of Documents	5,148	7,717	0.67
Miscellaneous Reimbursements	14,395	246	58.51
TOTALS	\$ 1,717,734	\$ 2,436,260	0.71

REVENUE INTO DAMAGE MITIGATION ACCOUNT as of 2/1/13	
	FY13
Transfer in from Orphan Share	0
RIT Interest	0
Bond Forfeitures	0
Reimburse for Fencing (Segelman)	-
Interest on Investments	516
TOTAL	\$ 516

BOND FORFEITURES AS OF 2/1/13 Go into Damage Mitigation Account	
Athena Energy LLC	52,642
TOTAL	52,642

REVENUE INTO GENERAL FUND FROM FINES as of 2/1/13	
	FY 13
McOil Montana One LLC	340
Native American Energy Group Inc.	100
Herc Exploration, LLC	60
Native American Energy Group Inc.	2000
Anschutz Exploration Corporation	500
ENCORE ENERGY PARTNERS OPERATING LLC	5,000
CCG LLC	70
LINN OPERATING INC	60
HAWLEY OIL LLP	500
GREY WOLF PRODUCTION COMPANY INC.	100
LONGSHOT OIL LLC	60
LINN OPERATING INC	60
HOFLAND JAMES D	400
IRGENS, MARIAN	70
GREY WOLF PRODUCTION COMPANY INC.	100
BRIGHAM OIL & GAS LP	1,000
CABOT OIL & GAS CORPORATION	500
KNAUP HARRY & LUCILLE	70
QUINQUE OIL	80
FIDELITY EXPLORATION & PRODUCTION CO	1,000
RF PARSELL PARTNERSHIP	60
CABOT OIL & GAS CORPORATION	250
Slochcin Inc.	70
Columbia Petroleum LTD Trust	60
Hardrock Oil Company	70
Irgens, Marian	140
Sonkar Inc.	70
Grey Wolf Production Company Inc.	100
TOTAL	\$ 12,890.00

INVESTMENT ACCOUNT BALANCES 2/11/13	
Oil & Gas ERA	2,599,349
Damage Mitigation	431,382

GRANT BALANCES - 2/1/13			
<u>Name</u>	<u>Authorized Amt</u>	<u>Expended</u>	<u>Balance</u>
2009 Northern	322,236	68,638	253,598
2009 Southern	315,219	0	315,219
2007 Tank Battery	304,847	304,847	0
2011 Southern - Tank Battery2	204,951	37,320	167,631
2011 Eastern	318,498	0	318,498
TOTALS	\$1,465,751	\$410,805	\$1,054,946

CONTRACT BALANCES - 2/1/13			
EOR Study - MT Tech	355,669	108,888	246,781
Automated Maintenance Services, Inc.	27,458	10,479	16,979
Agency Legal Services - Legal	60,000	8,510	51,490
Central Avenue Mall	400	400	0
Liquid Gold Well Service, Inc. - 09 Northern	200,000	68,638	131,362
Liquid Gold Well Service, Inc. - 09 Southern	165,000	0	165,000
C-Brewer - 07 & 11 Southern Tank Battery	424,650	342,167	82,483
Liquid Gold Well Service - 11 Eastern	201,459	0	201,459
TOTALS	1,434,636	539,082	895,554

Agency Legal Services Expenditures in FY13

Case	Amt Spent	Last Svc Date
BOGC Duties	8,510	12/12
Total	8,510	

Montana Board of Oil and Gas Conservation Summary of Bond Activity

Exhibit 4

12/10/2012 Through 2/13/2013

Approved

Alme, Henry A. Cut Bank MT	611 M1	Approved Amount: Purpose:	2/6/2013 \$50,000.00 Multiple Well Bond
Certificate of Deposit	\$50,000.00	FIRST STATE BANK OF SHELBY	
Antelope Resources, Inc. Billings MT	365 G6	Approved Amount: Purpose:	1/18/2013 \$5,000.00 UIC Single Well Bond
Certificate of Deposit	\$5,000.00	FIRST STATE BANK OF SHELBY	
GreenHunter Water, LLC Grapevine TX	679 V1	Approved Amount: Purpose:	12/19/2012 \$50,000.00 UIC Blanket Bond
Surety Bond	\$50,000.00	U.S. Specialty Insurance Co.	
North Range Exploration, LLC Lake Placid NY	725 G3	Approved Amount: Purpose:	1/15/2013 \$10,000.00 Single Well Bond
Certificate of Deposit	\$10,000.00	STOCKMAN BANK, BILLINGS	
Onshore Holdings, LLC Austin TX	704 M1	Approved Amount: Purpose:	2/5/2013 \$50,000.00 Multiple Well Bond
Surety Bond	\$50,000.00	RLI INSURANCE COMPANY	
R.C.S. Oil, Inc. East Coulee AB	418 G2	Approved Amount: Purpose:	1/11/2013 \$1,500.00 Single Well Bond
Certificate of Deposit	\$1,500.00	FIRST STATE BANK OF SHELBY	
R.C.S. Oil, Inc. East Coulee AB	418 G3	Approved Amount: Purpose:	1/11/2013 \$1,500.00 Single Well Bond
Certificate of Deposit	\$1,500.00	FIRST STATE BANK OF SHELBY	
R.C.S. Oil, Inc. East Coulee AB	418 G4	Approved Amount: Purpose:	1/11/2013 \$1,500.00 Single Well Bond
Certificate of Deposit	\$1,500.00	FIRST STATE BANK OF SHELBY	
R.C.S. Oil, Inc. East Coulee AB	418 G5	Approved Amount: Purpose:	1/11/2013 \$1,500.00 Single Well Bond
Certificate of Deposit	\$1,500.00	FIRST STATE BANK OF SHELBY	
R.C.S. Oil, Inc. East Coulee AB	418 G1	Approved Amount: Purpose:	1/11/2013 \$1,500.00 Single Well Bond
Certificate of Deposit	\$1,500.00	FIRST STATE BANK OF SHELBY	

Montana Board of Oil and Gas Conservation Summary of Bond Activity

12/10/2012 Through 2/13/2013

Approved

R.C.S. Oil, Inc. East Coulee AB	418 G6	Approved	1/11/2013
		Amount:	\$1,500.00
		Purpose:	Single Well Bond
Certificate of Deposit	\$1,500.00	FIRST STATE BANK OF SHELBY	
R.C.S. Oil, Inc. East Coulee AB	418 G7	Approved	1/11/2013
		Amount:	\$1,500.00
		Purpose:	Single Well Bond
Certificate of Deposit	\$1,500.00	FIRST STATE BANK OF SHELBY	
R.C.S. Oil, Inc. East Coulee AB	418 G8	Approved	1/11/2013
		Amount:	\$1,500.00
		Purpose:	Single Well Bond
Certificate of Deposit	\$1,500.00	FIRST STATE BANK OF SHELBY	
R.C.S. Oil, Inc. East Coulee AB	418 G9	Approved	1/11/2013
		Amount:	\$1,500.00
		Purpose:	Single Well Bond
Certificate of Deposit	\$1,500.00	FIRST STATE BANK OF SHELBY	
Sagebrush Resources II, LLC Highlands Ranch CO	692 G2	Approved	1/14/2013
		Amount:	\$10,000.00
		Purpose:	Single Well Bond
Certificate of Deposit	\$10,000.00	FIRST STATE BANK OF SHELBY	

Released

Compass Energy, Inc. Shelby MT	229 G7	Released	12/19/2012
		Amount:	\$5,000.00
		Purpose:	Single Well Bond
Certificate of Deposit	\$5,000.00	Wells Fargo Bank, NA	
Pennaco Energy, Inc. Denver CO	236 M1	Released	1/15/2013
		Amount:	\$50,000.00
		Purpose:	Multiple Well Bond
Surety Bond	\$50,000.00	TRAVELERS CASUALTY & SURETY CO. OF AMERICA	

Montana Board of Oil and Gas Conservation Summary of Bond Activity

12/10/2012 Through 2/13/2013

Approved

R.C.S. Oil, Inc. East Coulee AB	418 G6	Approved	1/11/2013
		Amount:	\$1,500.00
		Purpose:	Single Well Bond
Certificate of Deposit	\$1,500.00	FIRST STATE BANK OF SHELBY	
R.C.S. Oil, Inc. East Coulee AB	418 G7	Approved	1/11/2013
		Amount:	\$1,500.00
		Purpose:	Single Well Bond
Certificate of Deposit	\$1,500.00	FIRST STATE BANK OF SHELBY	
R.C.S. Oil, Inc. East Coulee AB	418 G8	Approved	1/11/2013
		Amount:	\$1,500.00
		Purpose:	Single Well Bond
Certificate of Deposit	\$1,500.00	FIRST STATE BANK OF SHELBY	
R.C.S. Oil, Inc. East Coulee AB	418 G9	Approved	1/11/2013
		Amount:	\$1,500.00
		Purpose:	Single Well Bond
Certificate of Deposit	\$1,500.00	FIRST STATE BANK OF SHELBY	
Sagebrush Resources II, LLC Highlands Ranch CO	692 G2	Approved	1/14/2013
		Amount:	\$10,000.00
		Purpose:	Single Well Bond
Certificate of Deposit	\$10,000.00	FIRST STATE BANK OF SHELBY	

Released

Compass Energy, Inc. Shelby MT	229 G7	Released	12/19/2012
		Amount:	\$5,000.00
		Purpose:	Single Well Bond
Certificate of Deposit	\$5,000.00	Wells Fargo Bank, NA	
Pennaco Energy, Inc. Denver CO	236 M1	Released	1/15/2013
		Amount:	\$50,000.00
		Purpose:	Multiple Well Bond
Surety Bond	\$50,000.00	TRAVELERS CASUALTY & SURETY CO. OF AMERICA	

Docket Summary

1-2013	Southwestern Energy Production Co.	Permanent spacing unit, Bakken/Three Forks Formation, 33N-52E-1: all (Bedwell 33-52 1-1H).		<input type="checkbox"/>
2-2013	Primary Petroleum Company, LLC	Permanent spacing unit, Lodgepole Formation, 27N-6W-34: E/2W/2 (Spring Hill 14-34H-27-6).		<input type="checkbox"/>
3-2013	Whiting Oil and Gas Corporation	Permanent spacing unit, Bakken/Three Forks Formation, 25N-57E-16: all, 21: all (Norby 21-16-1H).	<i>TSU by Order 415-2011; 500/ 200.</i> <i>Related Dockets 3-2013, 4-2013, 5-2013.</i>	<input type="checkbox"/>
4-2013	Whiting Oil and Gas Corporation	Pool, permanent spacing unit, Bakken/Three Forks Formation, 25N-57E-16: all, 21: all (Norby 21-16-1H). Non-consent penalties requested.	<i>Related Dockets 3-2013, 4-2013, 5-2013.</i>	<input type="checkbox"/>
5-2013	Whiting Oil and Gas Corporation	Exception to drill up to three additional wells, permanent spacing unit, Bakken/Three Forks Formation, 25N-57E-16: all, 21: all, 200' heel/toe, 500' lateral setbacks. Default request.	<i>Related Dockets 3-2013, 4-2013, 5-2013.</i>	<input type="checkbox"/>
6-2013	Whiting Oil and Gas Corporation	Permanent spacing unit, Bakken/Three Forks Formation, 25N-57E-30: all, 31: all (Simmers 4-21-30-1H).	<i>TSU by Order 412-2011; 500/ 200.</i> <i>Related Dockets 6-2013, 7-2013, 8-2013.</i>	<input type="checkbox"/>
7-2013	Whiting Oil and Gas Corporation	Pool, permanent spacing unit, Bakken/Three Forks Formation, 25N-57E-30: all, 31: all (Simmers 4-21-30-1H). Non-consent penalties requested.	<i>Related Dockets 6-2013, 7-2013, 8-2013.</i>	<input type="checkbox"/>
8-2013	Whiting Oil and Gas Corporation	Exception to drill up to three additional wells, permanent spacing unit, Bakken/Three Forks Formation, 25N-57E-30: all, 31: all, 200' heel/toe, 500' lateral setbacks. Default request.	<i>Related Dockets 6-2013, 7-2013, 8-2013.</i>	<input type="checkbox"/>
9-2013	Whiting Oil and Gas Corporation	Permanent spacing unit, Bakken/Three Forks Formation, 25N-57E-27: all, 34: all (Sorteberg 27-34-1H).	<i>TSU, Order 91-2010; 660 setbacks. (Well permitted 8/9/2010.)</i> <i>Related Dockets 9-2013, 10-2013, 11-2013.</i>	<input type="checkbox"/>
10-2013	Whiting Oil and Gas Corporation	Pool, permanent spacing unit, Bakken/Three Forks Formation, 25N-57E-27: all, 34: all (Sorteberg 27-34-1H). Non-consent penalties requested.	<i>Related Dockets 9-2013, 10-2013, 11-2013.</i>	<input type="checkbox"/>
11-2013	Whiting Oil and Gas Corporation	Exception to drill up to three additional wells, permanent spacing unit, Bakken/Three Forks Formation, 25N-57E-27: all, 34: all, 200' heel/toe, 500' lateral setbacks. Default request.	<i>Related Dockets 9-2013, 10-2013, 11-2013.</i>	<input type="checkbox"/>
12-2013	Whiting Oil and Gas Corporation	Permanent spacing unit, Bakken/Three Forks Formation, 26N-57E-14: all, 23: all (Kittleson Federal 34-23-1H).	<i>TSU, Order 262-2011, amended by 407-2011; 500/ 200.</i> <i>Related Dockets 12-2013, 13-2013, 14-2013.</i>	<input type="checkbox"/>
13-2013	Whiting Oil and Gas Corporation	Pool, permanent spacing unit, Bakken/Three Forks Formation, 26N-57E-14: all, 23: all (Kittleson Federal 34-23-1H). Non-consent penalties requested.	<i>Related Dockets 12-2013, 13-2013, 14-2013.</i>	<input type="checkbox"/>
14-2013	Whiting Oil and Gas Corporation	Exception to drill up to three additional wells, permanent spacing unit, Bakken/Three Forks Formation, 26N-57E-14: all, 23: all, 200' heel/toe, 500' lateral setbacks. Default request.	<i>Related Dockets 12-2013, 13-2013, 14-2013.</i>	<input type="checkbox"/>

15-2013	Whiting Oil and Gas Corporation	Permanent spacing unit, Bakken/Three Forks Formation, 26N-57E-13: all, 24: all (Kittleson Federal 24-24-1H).	Continued	TSU, Order 261-2011, amended by 40-2011; 500/200. Related Dockets 15-2013, 16-2013, 17-2013. Continued, fax recd 2/11/2013.	<input type="checkbox"/>
16-2013	Whiting Oil and Gas Corporation	Pool, permanent spacing unit, Bakken/Three Forks Formation, 26N-57E-13: all, 24: all (Kittleson Federal 24-24-1H). Non-consent penalties requested.	Continued	Related Dockets 15-2013, 16-2013, 17-2013. Continued, fax recd 2/11/2013.	<input type="checkbox"/>
17-2013	Whiting Oil and Gas Corporation	Exception to drill up to three additional wells, permanent spacing unit, Bakken/Three Forks Formation, 26N-57E-13: all, 24: all, 200' heel/toe, 500' lateral setbacks. Default request.	Continued	Related Dockets 15-2013, 16-2013, 17-2013. Continued, fax recd 2/11/2013.	<input type="checkbox"/>
18-2013	Whiting Oil and Gas Corporation	Pool, permanent spacing unit, Bakken/Three Forks Formation, 30N-57E-4: all, 9: all (Elvaas 21-4TFH). Non-consent penalties requested.		Related Docket 684-2012 - Permanent spacing; hear concurrently.	<input type="checkbox"/>
19-2013	Oasis Petroleum, Inc.	Exception to drill up to four additional wells, permanent spacing unit, Bakken/Three Forks Formation, 27N-59E-15: all, 22: all, 200' heel/toe, 500' lateral setbacks. Default request.	Default	Permanent spacing by Order 29-2012.	<input type="checkbox"/>
20-2013	Oasis Petroleum, Inc.	Permanent spacing unit, Bakken/Three Forks Formation, 27N-59E-30: all, 31: all (Fannie Federal 2759 43-19H).		TSU by Order 103-2010, amended by 444-2011, 269-2012; 500/200 setbacks. Related Dockets 20-2013, 21-2013.	<input type="checkbox"/>
21-2013	Oasis Petroleum, Inc.	Exception to drill up to four additional wells, permanent spacing unit, Bakken/Three Forks Formation, 27N-59E-30: all, 31: all, 200' heel/toe, 500' lateral setbacks. Default request.		Related Dockets 20-2013, 21-2013.	<input type="checkbox"/>
22-2013	Oasis Petroleum, Inc.	Permanent spacing unit, Bakken/Three Forks Formation, 28N-58E-30: all, 31: all (Grindland 31-30H).		TSU by Order 159-2010, amended by 104-2011; 1320/200. Related Dockets 22-2013, 23-2013.	<input type="checkbox"/>
23-2013	Oasis Petroleum, Inc.	Exception to drill up to four additional wells, permanent spacing unit, Bakken/Three Forks Formation, 28N-58E-30: all, 31: all, 200' heel/toe, 500' lateral setbacks. Default request.			<input type="checkbox"/>
24-2013	Oasis Petroleum, Inc.	Permanent spacing unit, Bakken/Three Forks Formation, 27N-58E-34: all, 26N-58E-3: all (Olson Bottoms Federal 2658 12-10H).		TSU, Order 310-2011; 1320/200. Related Dockets 24-2013, 25-2013, 26-2013.	<input type="checkbox"/>
25-2013	Oasis Petroleum, Inc.	Pool, permanent spacing unit, Bakken/Three Forks Formation, 27N-58E-34: all, 26N-58E-3: all (Olson Bottoms Federal 2658 12-10H).		Related Dockets 24-2013, 25-2013, 26-2013.	<input type="checkbox"/>
26-2013	Oasis Petroleum, Inc.	Exception to drill up to four additional wells, permanent spacing unit, Bakken/Three Forks Formation, 27N-58E-34: all, 26N-58E-3: all, 200' heel/toe, 500' lateral setbacks. Default request.		Related Dockets 24-2013, 25-2013, 26-2013.	<input type="checkbox"/>
27-2013	Oasis Petroleum, Inc.	Permanent spacing unit, Bakken/Three Forks Formation, 26N-58E-4: all, 9: all (David Federal 2658 43-9H).		TSU, Order 21-2012; (Orphan tract created.) 1320/200. Related Dockets 27-2013, 28-2013, 29-2013.	<input type="checkbox"/>
28-2013	Oasis Petroleum, Inc.	Pool, permanent spacing unit, Bakken/Three Forks Formation, 26N-58E-4: all, 9: all (David Federal 2658 43-9H).		Related Dockets 27-2013, 28-2013, 29-2013.	<input type="checkbox"/>

29-2013	Oasis Petroleum, Inc.	Exception to drill up to four additional wells, permanent spacing unit, Bakken/Three Forks Formation, 26N-58E-4: all, 9: all, 200' heel/toe, 500' lateral setbacks. Default request.		Related Dockets 27-2013, 28-2013, 29-2013.	<input type="checkbox"/>
30-2013	Oasis Petroleum, Inc.	Permanent spacing unit, Bakken/Three Forks Formation, 26N-58E-16: all, 21: all (Sherri 2658 43-9H).		TSU, Order 25-2012; 1320/ 200. Related Dockets 30-2013, 31-2013, 32-2013.	<input type="checkbox"/>
31-2013	Oasis Petroleum, Inc.	Pool, permanent spacing unit, Bakken/Three Forks Formation, 26N-58E-16: all, 21: all (Sherri 2658 43-9H).		Related Dockets 30-2013, 31-2013, 32-2013.	<input type="checkbox"/>
32-2013	Oasis Petroleum, Inc.	Exception to drill up to four additional wells, permanent spacing unit, Bakken/Three Forks Formation, 26N-58E-16: all, 21: all, 200' heel/toe, 500' lateral setbacks. Default request.		Related Dockets 30-2013, 31-2013, 32-2013.	<input type="checkbox"/>
33-2013	Oasis Petroleum, Inc.	Permanent spacing unit, Bakken/Three Forks Formation, 26N-58E-26: all, 35: all (Otis 2658 43-23H).		TSU, Order 309-2011; 1320/ 200. Related Dockets 33-2013, 34-2013, 35-2013.	<input type="checkbox"/>
34-2013	Oasis Petroleum, Inc.	Pool, permanent spacing unit, Bakken/Three Forks Formation, 26N-58E-26: all, 35: all (Otis 2658 43-23H).		Related Dockets 33-2013, 34-2013, 35-2013.	<input type="checkbox"/>
35-2013	Oasis Petroleum, Inc.	Exception to drill up to four additional wells, permanent spacing unit, Bakken/Three Forks Formation, 26N-58E-26: all, 35: all, 200' heel/toe, 500' lateral setbacks. Default request.		Related Dockets 33-2013, 34-2013, 35-2013.	<input type="checkbox"/>
36-2013	Oasis Petroleum, Inc.	Permanent spacing unit, Bakken/Three Forks Formation, 26N-58E-14: all, 23: all (Carl Federal 2658 43-23H).	Continued	TSU, Order 306-2011; Related Dockets 36-2013, 37-2013. Continued to April, fax recd 2/4/2013.	<input type="checkbox"/>
37-2013	Oasis Petroleum, Inc.	Exception to drill up to four additional wells, permanent spacing unit, Bakken/Three Forks Formation, 26N-58E-14: all, 23: all, 200' heel/toe, 500' lateral setbacks. Default request.	Continued	Related Dockets 36-2013, 37-2013. Continued to April, fax recd 2/4/2013.	<input type="checkbox"/>
38-2013	Oasis Petroleum, Inc.	Vacate Order 128-2010 (temporary spacing unit, Bakken/Three Forks Formation, 29N-58E-21: all, 28: all). Default Dockete requested.		Order 128-2010 - TSU, Sections 21 & 28; 660' setback. Existing permitted well (EOG), 200' toe/ heel setbacks as per special statewide order.	<input checked="" type="checkbox"/>
39-2013	EOG Resources, Inc.	Permanent spacing unit, Bakken/Three Forks Formation, 29N-59E-28: all, 33: all (Highline 1-2833H).	Continued	TSU, Order 83-2010; 660/ 500 from North Dakota. Related Dockets 39-2013, 40-2013, 41-2013. Continued to April, ltr dated 1/16/2013.	<input type="checkbox"/>
40-2013	EOG Resources, Inc.	Pool, permanent spacing unit, Bakken/Three Forks Formation, 29N-59E-28: all, 33: all (Highline 1-2833H). Continued to April, ltr dated 1/16/2013.	Continued	Related Dockets 39-2013, 40-2013, 41-2013. Continued to April, ltr dated 1/16/2013.	<input type="checkbox"/>
41-2013	EOG Resources, Inc.	Exception to drill an additional well, permanent spacing unit, Bakken/Three Forks Formation, 29N-59E-28: all, 33: all, 200' heel/toe, 500' lateral setbacks. Default request.	Continued	Related Dockets 39-2013, 40-2013, 41-2013. Continued to April, ltr dated 1/16/2013.	<input type="checkbox"/>
42-2013	Continental Resources Inc	Exception to statewide, Bakken/Three Forks Formation, 23N-53E-28: all, 200' heel/toe, 660' lateral setbacks. Apply for permanent spacing within 90 days of successful completion. Default request.	Default		<input type="checkbox"/>
43-2013	Continental Resources Inc	Exception to statewide, Bakken/Three Forks Formation, 24N-52E-35: all, 200' heel/toe, 660' lateral setbacks. Apply for permanent spacing within 90 days of successful completion. Default request.	Default		<input type="checkbox"/>

44-2013	Continental Resources Inc	Exception to statewide, Bakken/Three Forks Formation, 23N-52E-28: all, 200' heel/toe, 660' lateral setbacks. Apply for permanent spacing within 90 days of successful completion. Default request.	Default		<input type="checkbox"/>
45-2013	Continental Resources Inc	Exception to statewide, Bakken/Three Forks Formation, 23N-52E-34: all, 200' heel/toe, 660' lateral setbacks. Apply for permanent spacing within 90 days of successful completion. Default request.	Default		<input type="checkbox"/>
46-2013	Continental Resources Inc	Exception to statewide, Bakken/Three Forks Formation, 23N-52E-20: all, 200' heel/toe, 660' lateral setbacks. Apply for permanent spacing within 90 days of successful completion. Default request.	Default		<input type="checkbox"/>
47-2013	Continental Resources Inc	Exception to statewide, Bakken/Three Forks Formation, 23N-54E-26: all, 200' heel/toe, 660' lateral setbacks. Apply for permanent spacing within 90 days of successful completion. Default request.	Default		<input type="checkbox"/>
48-2013	Continental Resources Inc	Exception to statewide, Bakken/Three Forks Formation, 23N-54E-34: all, 200' heel/toe, 660' lateral setbacks. Apply for permanent spacing within 90 days of successful completion. Default request.	Default		<input type="checkbox"/>
49-2013	Continental Resources Inc	Temporary spacing unit, Bakken/Three Forks Formation, 23N-54E-13: all, 24: all, 200' heel/toe, 1320' lateral setbacks. Apply for permanent spacing within 90 days of successful completion. Default request.	Default		<input type="checkbox"/>
50-2013	Continental Resources Inc	Exception to statewide, Bakken/Three Forks Formation, 23N-53E-5: all, 200' heel/toe, 660' lateral setbacks. Apply for permanent spacing within 90 days of successful completion. Default request.	Default	Existing permitted well, statewide (660 setback).	<input type="checkbox"/>
51-2013	Continental Resources Inc	Amend Order 274-2008 to allow 200' heel/ toe setback for authorized well in overlapping temporary spacing unit, Bakken/Three Forks Formation, 23N-56E-9: all, 10: all, 15: all, 16: all. Apply for permanent spacing within 90 days of successful completion. Default request.	Default	Well to be located within 500' of common boundary between existing spacing units; this request is for 200' toe/ heel setback from overlapping spacing unit boundaries.	<input type="checkbox"/>
52-2013	Continental Resources Inc	Amend Order 276-2008 to allow 200' heel/ toe setback for authorized well in overlapping temporary spacing unit, Bakken/Three Forks Formation, 24N-54E-17: all, 18: all, 19: all, 20: all. Apply for permanent spacing within 90 days of successful completion. Default request.	Default	Well to be located within 500' of common boundary between existing spacing units; this request is for 200' toe/ heel setback from overlapping spacing unit boundaries.	<input type="checkbox"/>
53-2013	Continental Resources Inc	Amend Order 277-2008 to allow 200' heel/ toe setback for authorized well in overlapping temporary spacing unit, Bakken/Three Forks Formation, 25N-55E-17: all, 18: all, 19: all, 20: all. Apply for permanent spacing within 90 days of successful completion. Default request.	Default	Well to be located within 500' of common boundary between existing spacing units; this request is for 200' toe/ heel setback from overlapping spacing unit boundaries.	<input type="checkbox"/>
54-2013	Continental Resources Inc	Amend Order 280-2008 to allow 200' heel/ toe setback for authorized well in overlapping temporary spacing unit, Bakken/Three Forks Formation, 23N-55E-10: all, 11: all, 14: all, 15: all. Apply for permanent spacing within 90 days of successful completion. Default request.	Default	Well to be located within 500' of common boundary between existing spacing units; this request is for 200' toe/ heel setback from overlapping spacing unit boundaries.	<input type="checkbox"/>
55-2013	Continental Resources Inc	Amend Order 284-2008 to allow 200' heel/ toe setback for authorized well in overlapping temporary spacing unit, Bakken/Three Forks Formation, 23N-55E-9: all, 10: all, 15: all, 16: all. Apply for permanent spacing within 90 days of successful completion. Default request.	Default	Well to be located within 500' of common boundary between existing spacing units; this request is for 200' toe/ heel setback from overlapping spacing unit boundaries.	<input type="checkbox"/>

56-2013	Continental Resources Inc	Amend Order 285-2008 to allow 200' heel/ toe setback for authorized well in overlapping temporary spacing unit, Bakken/Three Forks Formation, 23N-55E-12: all, 13: all, 23N-56E-7; all, 18: all. Apply for permanent spacing within 90 days of successful completion. Default request.	Default	Well to be located within 500' of common boundary between existing spacing units; this request is for 200' toe/ heel setback from overlapping spacing unit boundaries.	<input type="checkbox"/>
57-2013	Continental Resources Inc	Amend Order 286-2008 to allow 200' heel/ toe setback for authorized well in overlapping temporary spacing unit, Bakken/Three Forks Formation, 23N-56E-8: all, 9: all, 16: all, 17: all. Apply for permanent spacing within 90 days of successful completion. Default request.	Default	Well to be located within 500' of common boundary between existing spacing units; this request is for 200' toe/ heel setback from overlapping spacing unit boundaries.	<input type="checkbox"/>
58-2013	Continental Resources Inc	Amend Order 287-2008 to allow 200' heel/ toe setback for authorized well in overlapping temporary spacing unit, Bakken/Three Forks Formation, 24N-54E-5: all, 6: all, 7: all, 8: all. Apply for permanent spacing within 90 days of successful completion. Default request.	Default	Well to be located within 500' of common boundary between existing spacing units; this request is for 200' toe/ heel setback from overlapping spacing unit boundaries.	<input type="checkbox"/>
59-2013	Continental Resources Inc	Amend Order 288-2008 to allow 200' heel/ toe setback for authorized well in overlapping temporary spacing unit, Bakken/Three Forks Formation, 23N-56E-21: all, 22: all, 27: all, 28: all. Apply for permanent spacing within 90 days of successful completion. Default request.	Default	Well to be located within 500' of common boundary between existing spacing units; this request is for 200' toe/ heel setback from overlapping spacing unit boundaries.	<input type="checkbox"/>
60-2013	Continental Resources Inc	Amend Order 341-2008 to allow 200' heel/ toe setback for authorized well in overlapping temporary spacing unit, Bakken/Three Forks Formation, 23N-55E-22: all, 23: all, 26: all, 27: all. Apply for permanent spacing within 90 days of successful completion. Default request.	Default	Well to be located proximal to common boundary between existing spacing units; this request is for 200' toe/ heel setback from overlapping spacing unit boundaries.	<input type="checkbox"/>
61-2013	Continental Resources Inc	Amend Order 342-2008 to allow 200' heel/ toe setback for authorized well in overlapping temporary spacing unit, Bakken/Three Forks Formation, 23N-55E-24: all, 25: all, 23N-56E-19: all, 30: all. Apply for permanent spacing within 90 days of successful completion. Default request.	Default	Well to be located in proximity of common boundary between existing spacing units; this request is for 200' toe/ heel setback from overlapping spacing unit boundaries.	<input type="checkbox"/>
62-2013	Continental Resources Inc	Amend Order 343-2008 to allow 200' heel/ toe setback for authorized well in overlapping temporary spacing unit, Bakken/Three Forks Formation, 23N-56E-20: all, 21: all, 28: all, 29: all. Apply for permanent spacing within 90 days of successful completion. Default request.	Default	Well to be located in proximity of common boundary between existing spacing units; this request is for 200' toe/ heel setback from overlapping spacing unit boundaries.	<input type="checkbox"/>
63-2013	Continental Resources Inc	Amend Order 344-2008 to allow 200' heel/ toe setback for authorized well in overlapping temporary spacing unit, Bakken/Three Forks Formation, 25N-55E-21: all, 22: all, 27: all, 28: all. Apply for permanent spacing within 90 days of successful completion. Default request.	Default	Well to be located in proximity of common boundary between existing spacing units; this request is for 200' toe/ heel setback from overlapping spacing unit boundaries. Ltr of support, Charger Resources.	<input type="checkbox"/>
64-2013	Continental Resources Inc	Amend Order 345-2008 to allow 200' heel/ toe setback for authorized well in overlapping temporary spacing unit, Bakken/Three Forks Formation, 23N-55E-23: all, 24: all, 25: all, 26: all. Apply for permanent spacing within 90 days of successful completion. Default request.	Default	Well to be located in proximity of common boundary between existing spacing units; this request is for 200' toe/ heel setback from overlapping spacing unit boundaries.	<input type="checkbox"/>
65-2013	Continental Resources Inc	Amend Order 165-2008, 200' heel/toe setback for additional well in permanent spacing unit, Bakken/Three Forks Formation, 24N-54E-26: all, 35: all. Default request.	Default	Order 165-2008 authorized one additional well in existing permanent spacing unit; request amendment to 200' toe/heel setbacks.	<input type="checkbox"/>

66-2013	Continental Resources Inc	Amend Order 108-2009, 200' toe/ heel setback for additional well in permanent spacing unit, Bakken/Three Forks Formation, 25N-52E-11: all, 14: all. Default request.	Default	Order 108-2009 authorized one additional well in existing permanent spacing unit; request amendment to 200' toe/heel setbacks.	<input type="checkbox"/>
67-2013	Continental Resources Inc	Overlapping permanent spacing unit, Bakken/Three Forks Formation, 23N-55E-3: all, 4: all, 24N-55E-33: all, 34: all (Dorothy Melvin 4 HSU).		TSU, Order 281-2008, 500' of common boundary, 660' toe/heel setback amended to 200' setback from south, 660' setback from north by Order 207-2012.	<input type="checkbox"/>
68-2013	Continental Resources Inc	Permanent spacing unit, Bakken/Three Forks Formation, 26N-56E-13: all, 24: all (Lewis 1-13H).		TSU by Order 292-2012, 1320/ 200. Related Dockets 68-2013, 69-2013, 70-2013.	<input type="checkbox"/>
69-2013	Continental Resources Inc	Pool, permanent spacing unit, Bakken/Three Forks Formation, 26N-56E-13: all, 24: all (Lewis 1-13H). Non-joinder penalties requested.	Continued	Related Dockets 68-2013, 69-2013, 70-2013. Continued, ltr dated 2/5/2013 recd 2/11/2013.	<input type="checkbox"/>
70-2013	Continental Resources Inc	Exception to drill up to three additional wells, permanent spacing unit, Bakken/Three Forks Formation, 26N-56E-13: all, 24: all, 200' heel/toe, 500' lateral setbacks. Default request.		Related Dockets 68-2013, 69-2013, 70-2013.	<input type="checkbox"/>
71-2013	Continental Resources Inc	Permanent spacing unit, Bakken/Three Forks Formation, 26N-53E-2: all, 11: all (Gorman 1-11H).		TSU, Order 169-2011, 1320/ 200. Related Dockets 71-2013, 72-2013.	<input type="checkbox"/>
72-2013	Continental Resources Inc	Exception to drill up to three additional wells, permanent spacing unit, Bakken/Three Forks Formation, 26N-53E-2: all, 11: all, 200' heel/toe, 500' lateral setbacks. Default request.		Related Dockets 71-2013, 72-2013.	<input type="checkbox"/>
73-2013	Continental Resources Inc	Permanent spacing unit, Bakken/Three Forks Formation, 26N-53E-14: all, 23: all (Egan 1-14H).		TSU, Order 170-2011. 1320/ 200. Related Dockets 73-2013, 74-2013, 75-2013.	<input type="checkbox"/>
74-2013	Continental Resources Inc	Pool, permanent spacing unit, Bakken/Three Forks Formation, 26N-53E-14: all, 23: all (Egan 1-14H). Non-joinder penalties requested.		Related Dockets 73-2013, 74-2013, 75-2013.	<input type="checkbox"/>
75-2013	Continental Resources Inc	Exception to drill up to three additional wells, permanent spacing unit, Bakken/Three Forks Formation, 26N-53E-14: all, 23: all, 200' heel/toe, 500' lateral setbacks. Default request.		Related Dockets 73-2013, 74-2013, 75-2013.	<input type="checkbox"/>
76-2013	Continental Resources Inc	Permanent spacing unit, Bakken/Three Forks Formation, 27N-55E-18: all, 19: all (Mackie 1-19H).		TSU, Order 300-2011, 1320/ 200.	<input type="checkbox"/>
77-2013	Continental Resources Inc	Permanent spacing unit, Bakken/Three Forks Formation, 26N-54E-1: all, 12: all (Sherman 1-1H).		TSU, Order 150-2010, 1320/ 200. Related Dockets 77-2013, 78-2013, 79-2013.	<input type="checkbox"/>
78-2013	Continental Resources Inc	Pool, permanent spacing unit, Bakken/Three Forks Formation, 26N-54E-1: all, 12: all (Sherman 1-1H). Non-joinder penalties requested.		Related Dockets 77-2013, 78-2013, 79-2013.	<input type="checkbox"/>
79-2013	Continental Resources Inc	Exception to drill up to three additional wells, permanent spacing unit, Bakken/Three Forks Formation, 26N-54E-1: all, 12: all, 200' heel/toe, 500' lateral setbacks. Default request.		Related Dockets 77-2013, 78-2013, 79-2013.	<input type="checkbox"/>
80-2013	Summit Gas Resources, Inc.	Plan of Development, Bradshaw Federal Unit, coalbed methane; portions of 8S-47E, 9S-46E, 9S-47E, 9S-48E.		Letter of protest, Stanley Morgan, recd 2/11/2013.	<input type="checkbox"/>

81-2013	Summit Gas Resources, Inc.	Delineation, all coal bed zones from the surface to base of Fort Union Formation, 220' setback from unit boundaries. Request to commingle different zones in wellbore; portions of 8S-47E, 9S-46E, 9S-47E, 9S-48E.		Letter of protest, Stanley Morgan, recd 2/11/2013.	<input type="checkbox"/>
82-2013	XTO Energy Inc.	Permanent spacing unit, Bakken/Three Forks Formation, 26N-52E-22: all, 23: all (Headington 43X-23B).	Continued	TSU by Order 304-2006. 660' setback amended to 200' toe/heel by special statewide order. Continued to April, fax recd 2/6/2013.	<input type="checkbox"/>
83-2013	XTO Energy Inc.	Permanent spacing unit, Bakken/Three Forks Formation, 26N-52E-24: all, 26N-53E-19: all (Ruffatto 13X-24B).	Continued	TSU by Order 482-2005; 660' setbacks amended to 200' toe/heel by special statewide order. Continued to April, fax recd 2/6/2013.	<input type="checkbox"/>
84-2013	Shakespeare Oil Co Inc	Temporary spacing unit, Ratcliffe to base of Red River Formation, 36N-54E-24: S/2SE/4, 25: N/2NE/4: all, proposed location 320' from north line and 660' from the east line of Section 25. Default request.	Default		<input type="checkbox"/>
85-2013	G3 Operating, LLC	Permanent spacing unit, Bakken/Three Forks Formation, 29N-57E-16: all, 21: all (Olson 1-21-16H).		TSU, Order 168-2010; 660' setback.	<input type="checkbox"/>
86-2013	Fidelity Exploration & Production Co.	Pool, permanent spacing unit, Bakken/Three Forks Formation, 22N-57E-8: all (Klose 8-17H). Non-consent penalties requested.		Order 542-2012 pooled interests; request for penalties?	<input type="checkbox"/>
87-2013	Epyon Oil, Inc.	Temporary spacing unit, Bakken/Three Forks Formation, 35N-58E-24: all; 200' toe/heel, 660' lateral (500' from ND border) setbacks. Apply for permanent spacing within 90 days of successful completion. Default request.	Default	In area covered by 1280's from special statewide order. CLARIFIED - 660' LATERAL SETBACK	<input type="checkbox"/>
88-2013	Longshot Oil, LLC	Exception to drill a horizontal Tensleep Formation well, 6S-36E-6; SW/4, 200' heel/toe, 330' lateral setbacks. Apply for permanent spacing within 90 days of successful completion. Default request.		200' toe/heel requested; will hear at request of BLM. [TRIBAL OR ALLOTTED LANDS ONLY.]	<input checked="" type="checkbox"/>
89-2013	Longshot Oil, LLC	Exception to drill four oil wells for steam injection pilot project, 24N-7E-10: NW/4NE/4 (Teton 1-2-10: 400' FNL/1650' FEL, Teton 2-2-10: 330' FNL/2310' FEL, Teton 3-2-10: 990' FNL/2310' FEL, Teton 4-2-10: 990' FNL/1650' FEL). Approval of pilot steamflood project. Default request.		Hear; requires Board approval under ARM 36.22.1229.	<input checked="" type="checkbox"/>
90-2013	Longshot Oil, LLC	Class II water injection permit, Swift Formation, undrilled Teton 2-10, 24N-7E-10: 665' FNL/ 2140' FEL (NW/4NE/4).	Default		<input type="checkbox"/>
91-2013	Anschutz Exploration Corporation	Temporary spacing unit, Marias River Formation, 31N-12W-12: NW/4, 330' setbacks. Apply for permanent spacing within 90 days of successful completion. Default request. (SW Browning 1-12H)	Default	Tribal application; BLM will accept as default. AMENDED to request TSU of NW/4 of Section 12 only.	<input type="checkbox"/>
92-2013	Anschutz Exploration Corporation	Temporary spacing unit, Marias River Formation, 31N-12W-12: S/2, 330' setbacks. Apply for permanent spacing within 90 days of successful completion. Default request. (SW Browning 2-12H)	Default	Tribal application; BLM will accept as default. AMENDED to request TSU of SW/4 of Section 12 only.	<input type="checkbox"/>
93-2013	Slawson Exploration Company Inc	Permanent spacing unit, Bakken/Three Forks Formation, 24N-52E-22: all (Sentinel 1-22H).	Continued	TSU, Order 151-2012; 660/ 200. Related Dockets 93-2013, 94-2013, 95-2013. Continued to April, fax recd 2/5/2013.	<input type="checkbox"/>

94-2013	Slawson Exploration Company Inc	Pool, permanent spacing unit, Bakken/Three Forks Formation, 24N-52E-22: all (Sentinel 1-22H). Non-consent penalties requested.	Continued	Related Dockets 93-2013, 94-2013, 95-2013. Continued to April, fax recd 2/5/2013.	<input type="checkbox"/>
95-2013	Slawson Exploration Company Inc	Exception to drill up to four additional wells, permanent spacing unit, Bakken/Three Forks Formation, 24N-52E-22: all, 200' heel/toe, 660' lateral setbacks. Default request.	Continued	Related Dockets 93-2013, 94-2013, 95-2013. Continued to April, fax recd 2/5/2013.	<input type="checkbox"/>
96-2013	Slawson Exploration Company Inc	Pool, permanent spacing unit, Bakken/Three Forks Formation, 25N-54E-7: all, 8: all (Cobra 1-7H). Non-consent penalties requested.	Continued	Previous spaced by Order 519-2005. Pooling, Docket 96-2013; additional wells, Docket 97-2013. Continued to April, fax recd 2/5/2013.	<input type="checkbox"/>
97-2013	Slawson Exploration Company Inc	Exception to drill up to four additional wells, permanent spacing unit, Bakken/Three Forks Formation, 25N-54E-7: all, 8: all, 200' heel/toe, 660' lateral setbacks. Default request.	Continued	Pooling, Docket 96-2013; additional wells, Docket 97-2013. Continued to April, fax recd 2/5/2013.	<input type="checkbox"/>
98-2013	Slawson Exploration Company Inc	Overlapping temporary spacing unit, Bakken/Three Forks Formation, 21N-58E-5: all, 8: all, 200' heel/toe, 660' lateral setbacks. Apply for permanent spacing within 90 days of successful completion. Default request.	Continued	Section 5 - existing one-section TSU by Order 381-2012 with permitted well (Lochaber 1-5H). Permit expires 7/10/2013. Continued to April, fax recd 2/5/2013. CONTINENTAL PROTEST RECD 2/11/2013.	<input checked="" type="checkbox"/>
99-2013	Slawson Exploration Company Inc	Overlapping temporary spacing unit, Bakken/Three Forks Formation, 21N-58E-4: all, 9: all, 200' heel/toe, 660' lateral setbacks. Apply for permanent spacing within 90 days of successful completion. Default request.	Continued	Section 4 - existing one-section TSU by Order 370-2012. Continued to April, fax recd 2/5/2013.	<input checked="" type="checkbox"/>
100-2013	Slawson Exploration Company Inc	Overlapping temporary spacing unit, Bakken/Three Forks Formation, 21N-58E-3: all, 10: all, 200' heel/toe, 660' lateral setbacks. Apply for permanent spacing within 90 days of successful completion. Default request.	Continued	[No existing spacing unit?] Continued to April, fax recd 2/5/2013.	<input checked="" type="checkbox"/>
101-2013	Slawson Exploration Company Inc	Overlapping temporary spacing unit, Bakken/Three Forks Formation, 21N-58E-11: all, 14: all, 200' heel/toe, 660' lateral setbacks. Apply for permanent spacing within 90 days of successful completion. Default request.	Continued	[No existing spacing unit?] Continued to April, fax rec'd 1/30/2013.	<input checked="" type="checkbox"/>
102-2013	Slawson Exploration Company Inc	Overlapping temporary spacing unit, Bakken/Three Forks Formation, 21N-59E-18: all, 19: all, 200' heel/toe, 660' lateral setbacks. Apply for permanent spacing within 90 days of successful completion. Default request.	Continued	Section 18 - existing one-section TSU by Order 514-2012 with permitted well (Targe 1-18H). Continued to April, fax rec'd 1/30/2013.	<input checked="" type="checkbox"/>
103-2013	Slawson Exploration Company Inc	Temporary spacing unit, Bakken/Three Forks Formation, 23N-53E-30: all, 200' heel/toe, 660' lateral setbacks. Apply for permanent spacing within 90 days of successful completion. Default request.	Continued	Continued to April, fax recd 2/5/2013.	<input type="checkbox"/>
104-2013	Slawson Exploration Company Inc	Permanent spacing unit, Ratcliffe Formation, 24N-59E-7: SE/4NW/4, SW/4NE/4, NE/2SW/4, NW/4SE/4 (Rudie 1).	Continued	Red River & Duperow well recompleted to Ratcliffe. Related Dockets 104-2013, 105-2013. Continued to April, fax recd 2/5/2013.	<input type="checkbox"/>
105-2013	Slawson Exploration Company Inc	Pool, permanent spacing unit, Ratcliffe Formation, 24N-59E-7: SE/4NW/4, SW/4NE/4, NE/4SW/4, NW/4SE/4 (Rudie 1). Non-consent penalties requested.	Continued	Related Dockets 104-2013, 105-2013. Continued to April, fax recd 2/5/2013.	<input type="checkbox"/>
106-2013	Vaalco Energy (USA), Inc.	Permanent spacing unit, Bakken Formation, 37N-56E-2: S/2 (Bolke 11-01H).		Spud 8/2012; 532 BO, 25190 BW reported in December. Related Dockets 106-2013, 107-2013.	<input type="checkbox"/>

107-2013	Vaalco Energy (USA), Inc.	Pool, permanent spacing unit, Bakken Formation, 37N-56E-2: S/2 (Bolke 11-01H).		Related Dockets 106-2013, 107-2013.	<input type="checkbox"/>
152-2012	EOG Resources, Inc.	Permanent spacing unit, Bakken/Three Forks Formation, 28N-59E-1: all, 2: all (Stateline 9-0201H).	Withdrawn	TSU by Order 75-2010; setback amendment by 230-2011. Withdrawn, email of 2/4/2013.	<input type="checkbox"/>
356-2012	EOG Resources, Inc.	Permanent spacing unit, Bakken/Three Forks Formation, 28N-59E-28: all, 33: all (Stateline 8-3328H).	Withdrawn	TSU, Order 52-2010; (200' setback, Order 51-2011). Withdrawn, ltr dated 1/14/2013.	<input type="checkbox"/>
442-2012	Continental Resources Inc	Temporary spacing unit, Bakken/Three Forks Formation, 29N-58E-9: all, 16: all; 200' toe/heel, 1320' lateral setbacks. Apply for permanent spacing within 90 days of successful completion. Default docket requested.	Default		<input type="checkbox"/>
444-2012	Continental Resources Inc	Temporary spacing unit, Bakken/Three Forks Formation, 29N-58E-20: all, 29: all; 200' toe/heel, 1320' lateral setbacks. Apply for permanent spacing within 90 days of successful completion. Default docket requested.	Default		<input type="checkbox"/>
476-2012	Oasis Petroleum, Inc.	Pool, permanent spacing unit, Bakken/Three Forks Formation, 27N-58E-4: all, 9: all (Signal Butte Federal 2758 43-9H). Non-consent penalties requested.	Continued	PSU, Order 352-2012; additional wells, Order 353-2012. Continued, email recd 2/11/2013.	<input type="checkbox"/>
490-2012	Brigham Oil & Gas LP	Permanent spacing unit, Bakken/Three Forks Formation, 26N-58E-13: all, 24: all (Shirley 13-24 #1-H).	Continued	TSU, Order 343-2011; 1320/200. 490-2012, spacing; 491-2012, pooling; 492-2012, additional wells. Continued, email recd 2/12/2013.	<input type="checkbox"/>
491-2012	Brigham Oil & Gas LP	Pool, permanent spacing unit, Bakken/Three Forks Formation, 26N-58E-13: all, 24: all (Shirley 13-24 #1-H). Non-joinder penalties requested.	Continued	490-2012, spacing; 491-2012, pooling; 492-2012, additional wells. Continued, email recd 2/12/2013.	<input type="checkbox"/>
492-2012	Brigham Oil & Gas LP	Exception to drill up to four additional wells, permanent spacing unit, Bakken/Three Forks Formation, 26N-58E-13: all, 24: all, 200' heel/toe, 500' lateral setbacks. Default request.	Continued	490-2012, spacing; 491-2012, pooling; 492-2012, additional wells. Continued, email recd 2/12/2013.	<input type="checkbox"/>
494-2012	Brigham Oil & Gas LP	Pool, permanent spacing unit, Bakken/Three Forks Formation, 28N-59E-18: all, 19: all (Willard 18-19 #1H). Non-joinder penalties requested.		PSU by Order 420-2012. Related Dockets 494-2012, pooling; 495-2012, additional wells.	<input type="checkbox"/>
495-2012	Brigham Oil & Gas LP	Vacate Order 39-2012 (exception to drill second well). Exception to drill up to four additional wells, permanent spacing unit, Bakken/Three Forks Formation, 28N-59E-18: all, 19: all, 200' heel/toe, 500' lateral setbacks. Default request.	Continued	Related Dockets 494-2012, pooling; 495-2012, additional wells. Continued, email recd 2/12/2013.	<input type="checkbox"/>
497-2012	Brigham Oil & Gas LP	Pool, permanent spacing unit, Bakken/Three Forks Formation, 28N-59E-30: all, 31: all (Wilde 30-31 #1H). Non-joinder penalties requested.		PSU, Order 421-2012. Related Dockets 497-2012, pooling; 498-2012, additional wells.	<input type="checkbox"/>

498-2012	Brigham Oil & Gas LP	Vacate Order 40-2012 (exception to drill second well). Exception to drill up to four additional wells, permanent spacing unit, Bakken/Three Forks Formation, 28N-59E-30: all, 31: all, 200' heel/toe, 500' lateral setbacks. Default request.	Continued	PSU, Oder 421-2012. Related Dockets 497-2012, pooling; 498-2012, additional wells. Continued, email recd 2/12/2013.	<input type="checkbox"/>
499-2012	Anadarko Minerals, Inc.	Permanent spacing unit, Nisku Formation, 30N-45E-16: W/2 (Dahl 3-16A).		500-2012, pooling. TSU, Order 184-2011, W/2 with 600' setback. (Related Dockets 646, 499, 500-2012.)	<input type="checkbox"/>
500-2012	Anadarko Minerals, Inc.	Pool, permanent spacing unit, Nisku Formation, 30N-45E-16: W/2 (Dahl 3-16A).		499-2012, spacing. (Related Dockets 646, 499, 500-2012.)	<input type="checkbox"/>
535-2012	Marathon Oil Corporation	Permanent spacing unit, Bakken/Three Forks Formation, 31N-59E-29: all, 32: all (Raymond Sweet 31-29H).		Spacing, 535-2012; pooling, 536-2012. TSU by Order 86-2010; Amended to 1320/200 targets with encroachment allowed between entry point and terminus.	<input type="checkbox"/>
536-2012	Marathon Oil Corporation	Pool, permanent spacing unit, Bakken/Three Forks Formation, 31N-59E-29: all, 32: all (Raymond Sweet 31-29H). Non-consent penalties requested.		Spacing, 535-2012; pooling, 536-2012.	<input type="checkbox"/>
537-2012	Marathon Oil Corporation 1-2013 F	Permanent spacing unit, Bakken/Three Forks Formation, 31N-59E-4: all, 9: all (Sorenson 34-9H).		TSU, 391-2011; 1320/200. Related Dockets Spacing, 537-2012; pooling, 538-2012.	<input type="checkbox"/>
538-2012	Marathon Oil Corporation	Pool, permanent spacing unit, Bakken/Three Forks Formation, 31N-59E-4: all, 9: all (Sorenson 34-9H). Non-consent penalties requested.		Spacing, 537-2012; pooling, 538-2012. Possible protest (?). (Related Dockets 614, 615-2012.)	<input type="checkbox"/>
614-2012	Fidelity Exploration & Production Co.	Permanent spacing unit, Heath Formation, 12N-32E-23: all (Kincheloe 11-23H).		TSU, Order 147-2011. (Related Dockets 614, 615-2012.)	<input type="checkbox"/>
615-2012	Fidelity Exploration & Production Co.	Pool, permanent spacing unit, Heath Formation, 12N-32E-23: all (Kincheloe 11-23H).		(Related Dockets 614, 615-2012.)	<input type="checkbox"/>
624-2012	Fidelity Exploration & Production Co.	Exception to drill up to three additional wells, permanent spacing unit, Bakken/Three Forks Formation, 22N-57E-8: all, 200' heel/toe, 660' lateral setbacks. Default request.	Withdrawn	(Related Dockets - 622, 623, 624, 625-2012.) Withdrawn, Fax rec'd 1/30/2013.	<input type="checkbox"/>
625-2012	Fidelity Exploration & Production Co.	Temporary spacing unit, Bakken/Three Forks Formation, 22N-57E-17: all; 200' toe/heel, 660' lateral setbacks. Apply for permanent spacing within 90 days of successful completion. Default request.	Withdrawn	(Related Dockets - 622, 623, 624, 625-2012.) Withdrawn, Fax rec'd 1/30/2013.	<input type="checkbox"/>
626-2012	Fidelity Exploration & Production Co.	Permanent spacing unit, Bakken/Three Forks Formation, 22N-56E-24: all (Klette 24-13H).	Withdrawn	(Related Dockets 626, 627, 628-2012.) > VACATE ORDER 12-2012 (TSU - SECTIONS 13, 24) ?? Withdrawn, Fax rec'd 1/30/2013.	<input type="checkbox"/>
627-2012	Fidelity Exploration & Production Co.	Exception to drill up to three additional wells, permanent spacing unit, Bakken/Three Forks Formation, 22N-56E-24: all, 200' heel/toe, 660' lateral setbacks. Default request.	Withdrawn	(Related Dockets 626, 627, 628-2012.) Withdrawn, Fax rec'd 1/30/2013.	<input type="checkbox"/>
628-2012	Fidelity Exploration & Production Co.	Temporary spacing unit, Bakken/Three Forks Formation, 22N-56E-13: all; 200' toe/heel, 660' lateral setbacks. Apply for permanent spacing within 90 days of successful completion. Default request.	Withdrawn	(Related Dockets 626, 627, 628-2012.) Withdrawn, Fax rec'd 1/30/2013.	<input type="checkbox"/>

629-2012	Fidelity Exploration & Production Co.	Permanent spacing unit, Bakken/Three Forks Formation, 22N-57E-22: all (Lisa 22-23H).		(Related Dockets 629, 630, 631-2012.) > VACATE ORDER 384-2011 (TSU - SECTIONS 22, 23.)	<input type="checkbox"/>
630-2012	Fidelity Exploration & Production Co.	Exception to drill up to three additional wells, permanent spacing unit, Bakken/Three Forks Formation, 22N-57E-22: all, 200' heel/toe, 660' lateral setbacks. Default request.	Withdrawn	(Related Dockets 629, 630, 631-2012.) Withdrawn, Fax rec'd 1/30/2013.	<input type="checkbox"/>
631-2012	Fidelity Exploration & Production Co.	Temporary spacing unit, Bakken/Three Forks Formation, 22N-57E-23: all; 200' toe/heel, 660' lateral setbacks. Apply for permanent spacing within 90 days of successful completion. Default request.	Withdrawn	(Related Dockets 629, 630, 631-2012.) Withdrawn, Fax rec'd 1/30/2013.	<input type="checkbox"/>
632-2012	Fidelity Exploration & Production Co.	Temporary spacing unit, Bakken/Three Forks Formation, 22N-57E-36: all; 200' toe/heel, 660' lateral setbacks. Apply for permanent spacing within 90 days of successful completion. Default request.	Withdrawn	> VACATE ORDER 383-2011 (TSU, SECTIONS 25, 36); Section 25 designated a PSU by Order 431-2012. Withdrawn, Fax rec'd 1/30/2013.	<input checked="" type="checkbox"/>
634-2012	Fidelity Exploration & Production Co.	Temporary spacing unit, Bakken/Three Forks Formation, 22N-56E-18: all; 200' toe/heel, 660' lateral setbacks. Apply for permanent spacing within 90 days of successful completion. Default request.	Withdrawn	Withdrawn, Fax rec'd 1/30/2013.	<input type="checkbox"/>
635-2012	Fidelity Exploration & Production Co.	Temporary spacing unit, Bakken/Three Forks Formation, 22N-56E-19: all; 200' toe/heel, 660' lateral setbacks. Apply for permanent spacing within 90 days of successful completion. Default request.	Withdrawn	Withdrawn, Fax rec'd 1/30/2013.	<input type="checkbox"/>
636-2012	Fidelity Exploration & Production Co.	Temporary spacing unit, Bakken/Three Forks Formation, 22N-56E-20: all; 200' toe/heel, 660' lateral setbacks. Apply for permanent spacing within 90 days of successful completion. Default request.	Withdrawn	Withdrawn, Fax rec'd 1/30/2013.	<input type="checkbox"/>
637-2012	Fidelity Exploration & Production Co.	Temporary spacing unit, Bakken/Three Forks Formation, 22N-56E-29: all; 200' toe/heel, 660' lateral setbacks. Apply for permanent spacing within 90 days of successful completion. Default request.	Withdrawn	Withdrawn, Fax rec'd 1/30/2013.	<input type="checkbox"/>
638-2012	Fidelity Exploration & Production Co.	Vacate Order 111-2012 that created a Bakken/Three Forks Formation temporary spacing unit comprised of 22N-57E-27: all, 34: all. Default request.	Withdrawn	Withdrawn, Fax rec'd 1/30/2013.	<input type="checkbox"/>
639-2012	Fidelity Exploration & Production Co.	Temporary spacing unit, Bakken/Three Forks Formation, 22N-57E-27: all, 200' toe/heel, 660' lateral setbacks. Apply for permanent spacing within 90 days of successful completion. Default request.	Withdrawn	Withdrawn, Fax rec'd 1/30/2013.	<input type="checkbox"/>
640-2012	Fidelity Exploration & Production Co.	Temporary spacing unit, Bakken/Three Forks Formation, 22N-57E-34: all, 200' toe/heel, 660' lateral setbacks. Apply for permanent spacing within 90 days of successful completion. Default request.	Withdrawn	Withdrawn, Fax rec'd 1/30/2013.	<input type="checkbox"/>
641-2012	Fidelity Exploration & Production Co.	Vacate Order 113-2012 that created a Bakken/Three Forks Formation temporary spacing unit comprised of 22N-57E-30: all, 31: all. Default request.	Withdrawn	Withdrawn, Fax rec'd 1/30/2013.	<input type="checkbox"/>
642-2012	Fidelity Exploration & Production Co.	Temporary spacing unit, Bakken/Three Forks Formation, 22N-57E-30: all, 200' toe/heel, 660' lateral setbacks. Apply for permanent spacing within 90 days of successful completion. Default request.	Withdrawn	Withdrawn, Fax rec'd 1/30/2013.	<input type="checkbox"/>
643-2012	Fidelity Exploration & Production Co.	Temporary spacing unit, Bakken/Three Forks Formation, 22N-57E-31: all, 200' toe/heel, 660' lateral setbacks. Apply for permanent spacing within 90 days of successful completion. Default request.	Withdrawn	Withdrawn, Fax rec'd 1/30/2013.	<input type="checkbox"/>

646-2012	Anadarko Minerals, Inc.	Vacate Order 186-2011 which designated the Dahl 1-16 as an additional Nisku Formation well, 30N-45E-16: N/2.		(Related Dockets 646, 499, 500-2012.)	<input type="checkbox"/>
684-2012	Whiting Oil and Gas Corporation	Permanent spacing unit, Bakken/Three Forks Formation, 30N-57E-4: all, 9: all (Elvsaas 21-4TFH).		TSU, Orders 261-2010 & 223-2011 amended by 380-2011 - 1320/ 200.	<input type="checkbox"/>
692-2012	Slawson Exploration Company Inc	Permanent spacing unit, Bakken/Three Forks Formation, 21N-59E-24: all (Pilum 1-24H).	Continued	TSU, Order 35-2012 - 660/200. (Related Dockets 692, 693-2012.) Continued to April, fax recd 2/5/2013.	<input type="checkbox"/>
693-2012	Slawson Exploration Company Inc	Exception to drill up to four additional wells, permanent spacing unit, Bakken/Three Forks Formation, 21N-59E-24: all, 200' heel/toe, 660' lateral setbacks. Default request.	Continued	(Related Dockets 692, 693-2012.) Continued to April, fax recd 2/5/2013.	<input type="checkbox"/>
696-2012	Slawson Exploration Company Inc	Permanent spacing unit, Bakken/Three Forks Formation, 23N-53E-36: all (Weasel 1-36H).	Continued	(Related Dockets 696, 697-2012.) Drilled under statewide temporary spacing rule - 660/660. Continued to April, fax recd 2/5/2013.	<input type="checkbox"/>
697-2012	Slawson Exploration Company Inc	Exception to drill up to four additional wells, permanent spacing unit, Bakken/Three Forks Formation, 23N-53E-36: all, 200' heel/toe, 660' lateral setbacks. Default request.	Continued	(Related Dockets 696, 697-2012.) Continued to April, fax recd 2/5/2013.	<input type="checkbox"/>
709-2012	Slawson Exploration Company Inc	Temporary spacing unit, Bakken/Three Forks Formation, 21N-59E-6: all, 7: all, 200' heel/toe, 660' lateral setbacks. Apply for permanent spacing within 90 days of successful completion. Default request.	Continued	1280-acre TSU request. Continued to April, fax recd 2/5/2013.	<input checked="" type="checkbox"/>
715-2012	Apache Western Exploration LLC	Temporary spacing unit, Bakken/Three Forks Formation, 36N-47E-1: all, 2: all; 200' toe/heel, 1320' lateral setbacks. Apply for permanent spacing within 90 days of successful completion. Default request.	Continued	Protested, Deanne Johnson; notice + other concerns. Continued to April 2013.	<input type="checkbox"/>
736-2012	Oasis Petroleum Inc.	Permanent spacing unit, Bakken/Three Forks Formation, 27N-58E-27: all, 28: all (Betsy Federal 2758 24-29H).	Continued	TSU, Order 441-2011 - 1320/200. (Related Dockets 736, 737, 738-2012.) Continued to April, fax recd 2/4/2013.	<input type="checkbox"/>
737-2012	Oasis Petroleum Inc.	Pool, permanent spacing unit, Bakken/Three Forks Formation, 27N-58E-27: all, 28: all (Betsy Federal 2758 24-29H). Non-consent penalties requested.	Continued	(Related Dockets 736, 737, 738-2012.) Continued to April, fax recd 2/4/2013.	<input type="checkbox"/>
738-2012	Oasis Petroleum Inc.	Exception to drill up to four additional wells, permanent spacing unit, Bakken/Three Forks Formation, 27N-58E-27: all, 28: all, 200' heel/toe, 500' lateral setbacks. Default request.	Continued	(Related Dockets 736, 737, 738-2012.) Continued to April, fax recd 2/4/2013.	<input type="checkbox"/>
746-2012	Oasis Petroleum Inc.	Pool, permanent spacing unit, Bakken/Three Forks Formation, 28N-58E-29: all, 32: all (Piercy Federal 2758 13-5H). Non-consent penalties requested.	Continued	PSU, Order 608-2012, Additional wells, Order 609-2012. Continued to April, fax recd 2/4/2013.	<input type="checkbox"/>
750-2012	Sands Oil Company	Permanent spacing unit, gas, Madison Formation, 27N-5W-4: SW/4 (Campbell 13-4).			<input type="checkbox"/>
751-2012	Sands Oil Company	Permanent spacing unit, Madison Formation, 28N-5W-20: S/2NE/4, 21: S/2NW/4 (New Miami Colony 42-20H).		Statewide TSU comprised of same lands.	<input type="checkbox"/>

758-2012	Brigham Oil & Gas LP	Permanent spacing unit, Bakken/Three Forks Formation, 25N-59E-15: all, 22: all (Warren 15-22 #1-H).	TSU, Order 472-2011.	<input type="checkbox"/>
			Related Dockets 758, 759, 760-2012.	
759-2012	Brigham Oil & Gas LP	Pool, permanent spacing unit, Bakken/Three Forks Formation, 25N-59E-15: all, 22: all (Warren 15-22 #1-H). Non-joinder penalties requested.		<input type="checkbox"/>
			Related Dockets 758, 759, 760-2012.	
760-2012	Brigham Oil & Gas LP	Exception to drill up to four additional wells, permanent spacing unit, Bakken/Three Forks Formation, 25N-59E-15: all, 22: all, 200' heel/toe, 500' lateral setbacks. Default request.		<input type="checkbox"/>
			Related Dockets 758, 759, 760-2012.	
761-2012	Brigham Oil & Gas LP	Permanent spacing unit, Bakken/Three Forks Formation, 25N-59E-3: all, 10: all (Judith 10-3 #1-H).	TSU, Order 139-2010; 2 wells authorized, Order 470-2011 (expired 12/15/2012).	<input type="checkbox"/>
			Related Dockets 761-2012, 762-2012, 763-2012.	
762-2012	Brigham Oil & Gas LP	Pool, permanent spacing unit, Bakken/Three Forks Formation, 25N-59E-3: all, 10: all (Judith 10-3 #1-H). Non-joinder penalties requested.		<input type="checkbox"/>
			Related Dockets 761-2012, 762-2012, 763-2012.	
763-2012	Brigham Oil & Gas LP	Exception to drill up to four additional wells, permanent spacing unit, Bakken/Three Forks Formation, 25N-59E-3: all, 10: all, 200' heel/toe, 500' lateral setbacks. Default request.		<input type="checkbox"/>
			Related Dockets 761-2012, 762-2012, 763-2012.	
108-2013	Kykuit Resources, LLC	Show Cause, failure to file production reports, pay penalty.		<input type="checkbox"/>
109-2013	Hofland, James D.	Failure to file production reports, pay penalty.		<input type="checkbox"/>
110-2013	J H Oil Company (James Hofland)	Failure to file production reports, pay penalty.		<input type="checkbox"/>
111-2013	Fairways Exploration & Production, LLC	Failure to file production reports, pay penalty.	Dismissed (Penalty & reports received 2/8/2013.)	<input type="checkbox"/>

From: DANNY MURPHY [dannyboyrad@yahoo.com]
Sent: Tuesday, February 05, 2013 3:01 PM
To: Sasaki, Steve
Subject: report to MT BOGC re: plugging 4 wells by AUG/13

Hi Steve,

At the August 9, 2012 meeting of the Montana Board of Oil and Gas Conservation(MT BOGC) Joni Stewart told the board that Mountain Pacific General(MPG) would plug 4 more wells by the August/2013 meeting of the Board. MPG was ordered to provide a list of the wells that will be plugged by the October 10, 2012 meeting, which we did and the 4 wells are as follows: Edmister Coulee #11-20, Galata #31-3-6-1, State #6-17, and Maurer #17-5. MPG was further ordered that at the first MT BOGC meeting of 2013 we provide a plugging report regarding those wells.

At this point in time there has been no progress made in plugging the above mentioned wells as it has been winter since we provided the list to the board. It is still our intention to plug all four wells. If you have any questions please contact me by return e-mail, phone me at (406)873-0040, or by us mail to 302 8th Ave. S.E., Cut Bank, MT 59427.

sincerely yours,

Danny Murphy, manager

RECEIVED

FEB 11 2013

MONTANA BOARD OF OIL &
GAS CONSERVATION • BILLINGS

Ronald S Efta

From: "McGinnis, Stephanie" <mcginnis@montana.edu>
Date: Tuesday, February 12, 2013 2:01 PM
To: <wcaefta@midrivers.com>
Cc: "Bender-Keigley, Janet" <jkeigley@montana.edu>
Attach: WaterSummitBlurb_RonEfta.docx; WaterSummitBudget_RonEfta.xlsx
Subject: FW: Montana Watercourse - Water Summit
 Hi Ron,

Janet asked me to forward some information along to you about our upcoming Water Summit and provide a sponsorship request that outlines our monetary needs – thank you so much for discussing the event with the board! Below (I've also attached as a word doc) is some background information on the event, specifics of this year's event, funding request, and a guest speaker topic if you might be interested in joining us in Essex. I've also attached a breakdown of funding needs in the excel sheet.

Thanks so much for your time and thoughts.

Montana Watercourse, a statewide water education program, is holding their 15th Annual Water Summit this year near Glacier National Park, May 8th, 9th, and 10th. Over the last fourteen years, the Water Summit has brought together a select group of 30 students and 10 teachers from across the state to learn about current water issues here in Montana.

Montana Watercourse's Water Summit provides science teachers and their students a forum to learn and share information about water quality and quantity in Montana. At this three-day event, teachers and students learn from government, education, and for-profit professionals in the field. Students will heighten their understanding of water issues in the state, develop character, build leadership skills, and create a sense of wonder about the natural world. Teachers will increase their understanding and application of water education. The experience is unique, cultivating watershed stewards out of both student and teacher by providing a forum to discuss and learn about current water issues here in Montana. This event also showcases potential careers opportunities for students in the water field, from photographer to attorney to scientist.

The theme of this year's Water Summit is hydraulic fracturing; a practice that has economic, ecologic, and cultural significance in Montana. Students and teachers will hear from various professionals and community members that are directly a part of, or influenced by, hydraulic fracturing. Participants will also take a field trip to view a hydraulic fracturing well in the community of Browning, potentially the next oil-and-gas boom town. The final day will be spent town hall style, with students representing various stakeholders with differing values to mimic the complex human-environment system that exists today in Browning and other communities. This final event not only allows the students to demonstrate knowledge and perspective gained throughout the Summit, this experience also gives students a unique opportunity to demonstrate communication and conflict resolution skills.

Typically, up to 30 students and 10 teachers from different school districts participate in the event. Although most of the professional speakers donate their time, the funds to

provide food, lodging, teacher travel reimbursement to site and travel while 'on location', and teacher 'substitute fees' must be supplied to enable teachers and their students to participate.

Our primary objective at this point is to cover travel and teacher 'substitute fees'. However, we are also still seeking funds to cover lodging. I have attached an excel spreadsheet detailing projected costs. We appreciate any contribution the Montana Board of Oil & Gas can make to help make this event a success.

We would also like to invite a board member to be a guest speaker at our event. We would like to hold a session on the rights/laws that govern hydraulic fracturing. This topic seems to fit well under the board's 3rd primary purpose listed on your website:

To protect the correlative rights of the mineral owners, i.e., the right of each owner to recover its fair share of the oil & gas underlying its lands. The board also seeks to prevent oil and gas operations from harming nearby land or underground resources. It accomplishes these goals by establishing spacing units, issuing drilling permits, administering bonds (required to guarantee the eventual proper plugging of wells and restoration of the surface), classifying wells, and adopting rules.

I would be interested to hear the board's thoughts on this topic as a potential session at our event.


Please contact me with any questions or comments you may have. I look forward to hearing back from you all.

Thanks,

Stephanie

Stephanie McGinnis
Coordinator of Education and Outreach, Montana Watercourse
339 Culbertson Hall
PO Box 170570
Bozeman, MT 59717
406-994-6425
mcginnis@montana.edu
www.mtwatercourse.org

February 14, 2013

TO: Montana Board of Oil and Gas Conservation
FROM: Pascual Laborda, Bureau of Land Management 
SUBJECT: Request for Communitization Agreement language in MBOGC's Orders

In the event any of the following docket numbers are approved by the MBOGC at the February 14, 2013, public hearing, the BLM requests inclusion of the standard Federal Communitization Agreement language in the MBOGC's Order pertaining to Federal or Indian Trust mineral lands:

<u>Docket No.</u>	<u>Applicant</u>
12-2013	Whiting Oil & Gas
14-2013	Whiting Oil & Gas
15-2013	Whiting Oil & Gas
17-2013	Whiting Oil & Gas
20-2013	Oasis Petroleum
21-2013	Oasis Petroleum
24-2013	Oasis Petroleum
26-2013	Oasis Petroleum
27-2013	Oasis Petroleum
29-2013	Oasis Petroleum
36-2013	Oasis Petroleum
37-2013	Oasis Petroleum
66-2013	Continental Resources
71-2013	Continental Resources
72-2013	Continental Resources
73-2013	Continental Resources
75-2013	Continental Resources
76-2013	Continental Resources
77-2013	Continental Resources
79-2013	Continental Resources
82-2013	XTO Energy
83-2013	XTO Energy
101-2013	Slawson Exploration
106-2013	Vaalco Energy
490-2012	Brigham Oil & Gas
492-2012	Brigham Oil & Gas
495-2012	Brigham Oil & Gas
537-2012/1-2013 FED	Marathon Oil
640-2012	Fidelity E&P

Thank you for your assistance in this matter.